



623 - 15 Brunel Court, Toronto

SULLIVAN

— REAL ESTATE —





Experience the best of downtown living at #623-15 Brunel Court, ideally situated in Toronto's dynamic CityPlace neighbourhood. Just moments from iconic landmarks like the CN Tower and Rogers Centre, this vibrant location puts you steps from the city's top entertainment, dining, and cultural attractions.

Step into this beautifully updated one-bedroom plus den suite where modern design meets effortless urban living. This thoughtfully designed suite combines comfort, style, and practicality. Featuring expansive floor-to-ceiling windows, the space is filled with natural light and showcases city views, creating a bright and inviting atmosphere throughout.

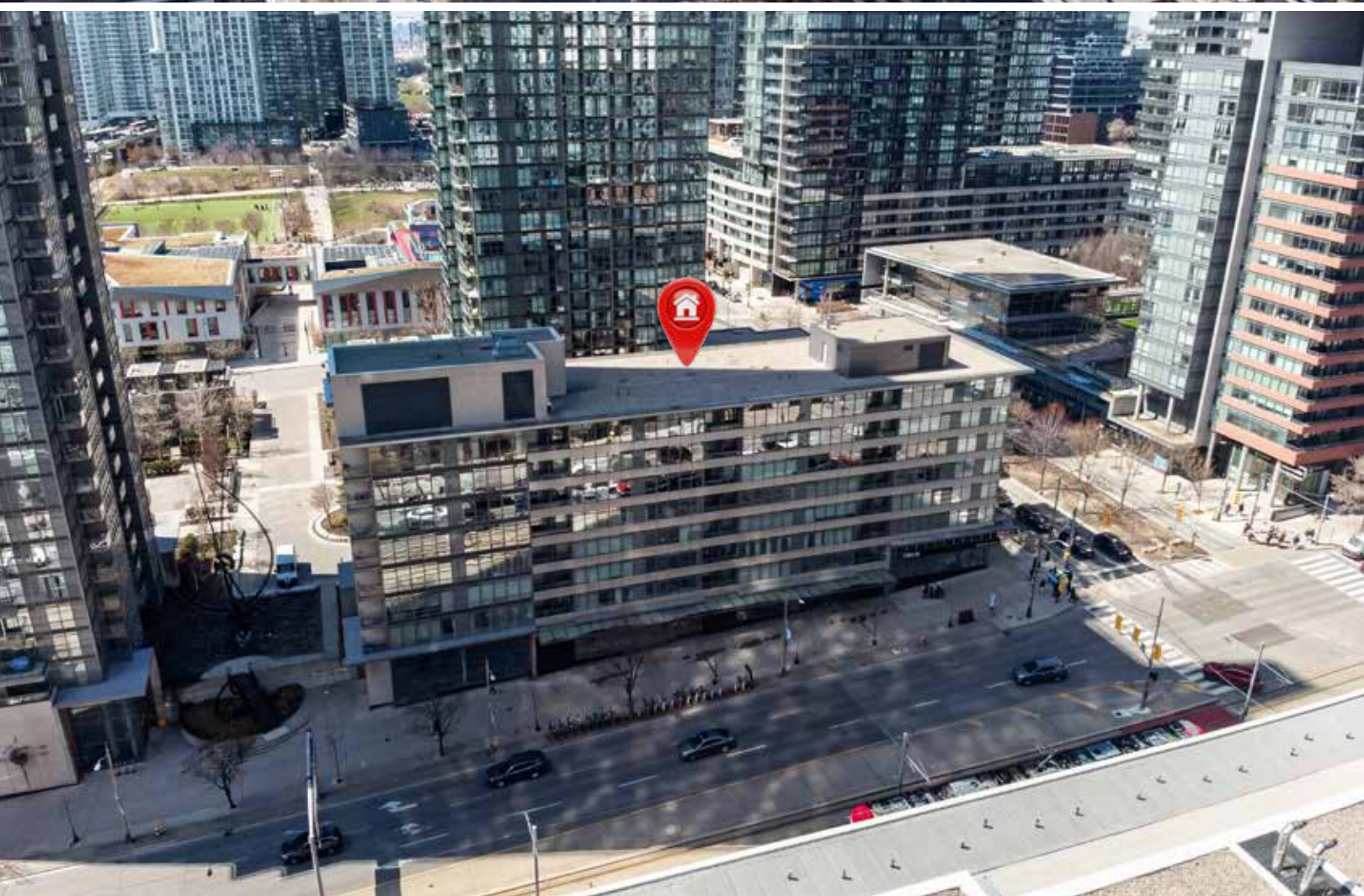
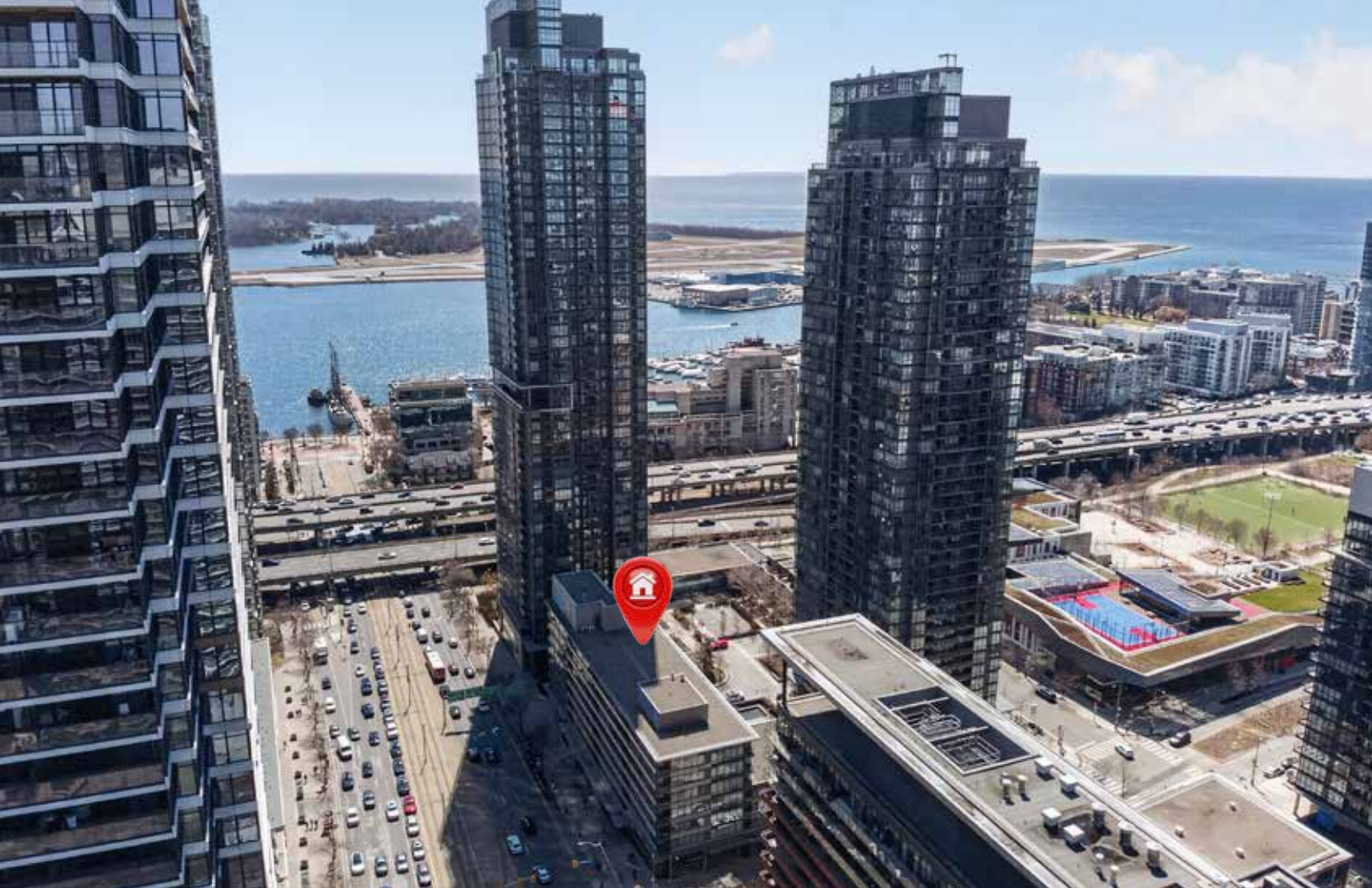
The upgraded kitchen is a true standout, complete with a center island offering lots of storage and counter space, elegant pendant lighting, sleek quartz countertops, and a contemporary tiled backsplash. Equipped with stainless steel appliances and abundant storage, it blends everyday functionality with a polished look perfect for both everyday living and entertaining.

The open-concept layout flows seamlessly into the living area, highlighted by modern vinyl flooring that adds warmth and cohesion to the space. The spacious bedroom offers comfort and privacy, while the versatile den provides the ideal setting for a home office or creative studio.

This well-appointed condominium offers residents access to an impressive array of amenities designed to enhance everyday living. Enjoy a fully equipped fitness center, indoor pool, sauna, and basketball court, or relax in the beautifully landscaped courtyard and outdoor terrace. Entertain friends and family in the stylish party room, games and billiards lounge, or take in breathtaking skyline views from the exclusive sky lounge. With 24-hour concierge service, guest suites, and secure underground parking, convenience and comfort are always at your fingertips.

Surrounded by some of Toronto's most exciting destinations, you'll find yourself within walking distance to The Well, waterfront trails, Canoe Landing Park, and the Financial District. Union Station and the PATH network are also nearby, offering seamless connectivity across the city.

This condo delivers an unbeatable urban lifestyle, an ideal opportunity for professionals, first-time buyers, or investors looking to own a piece of downtown Toronto.































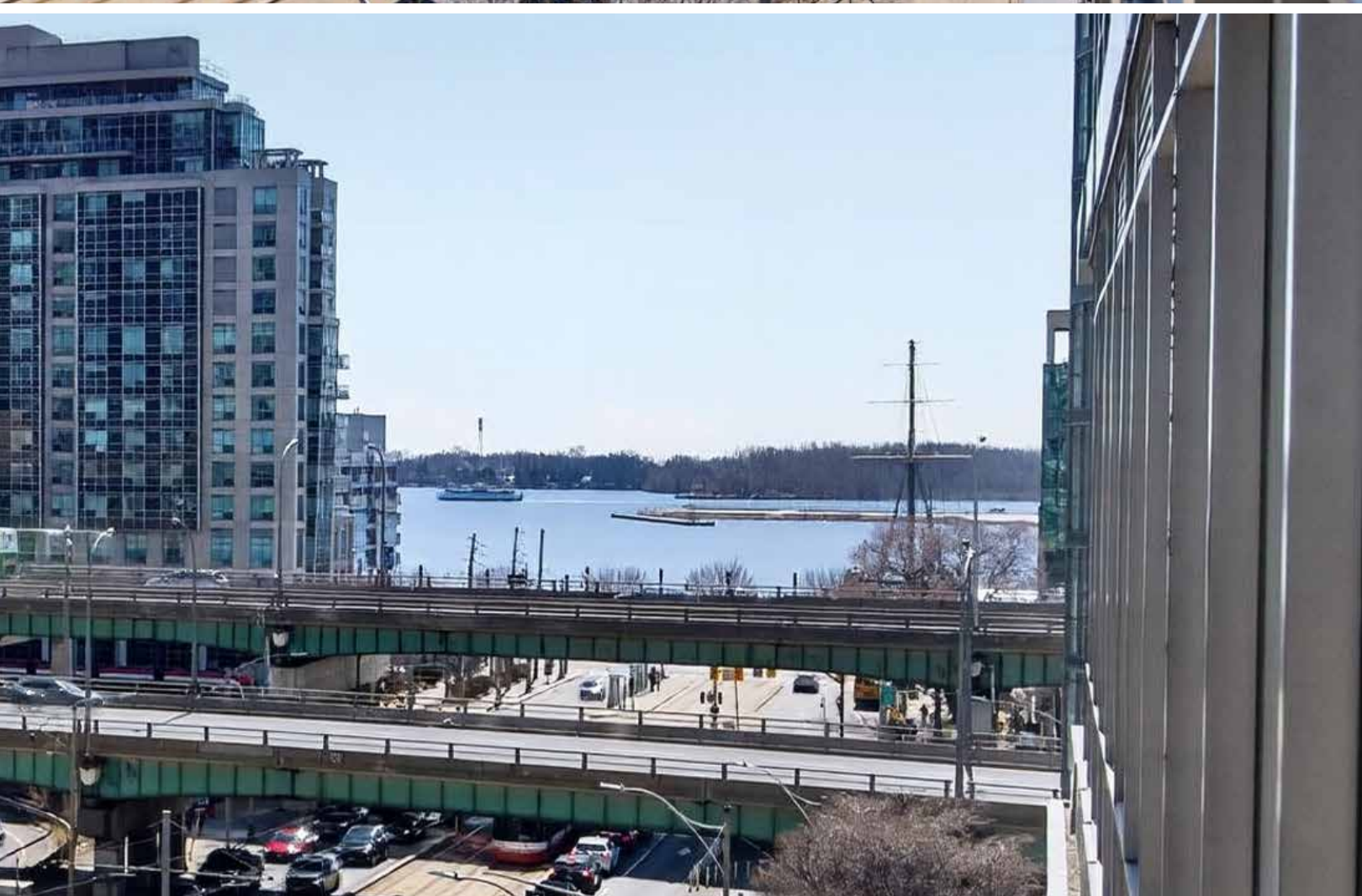




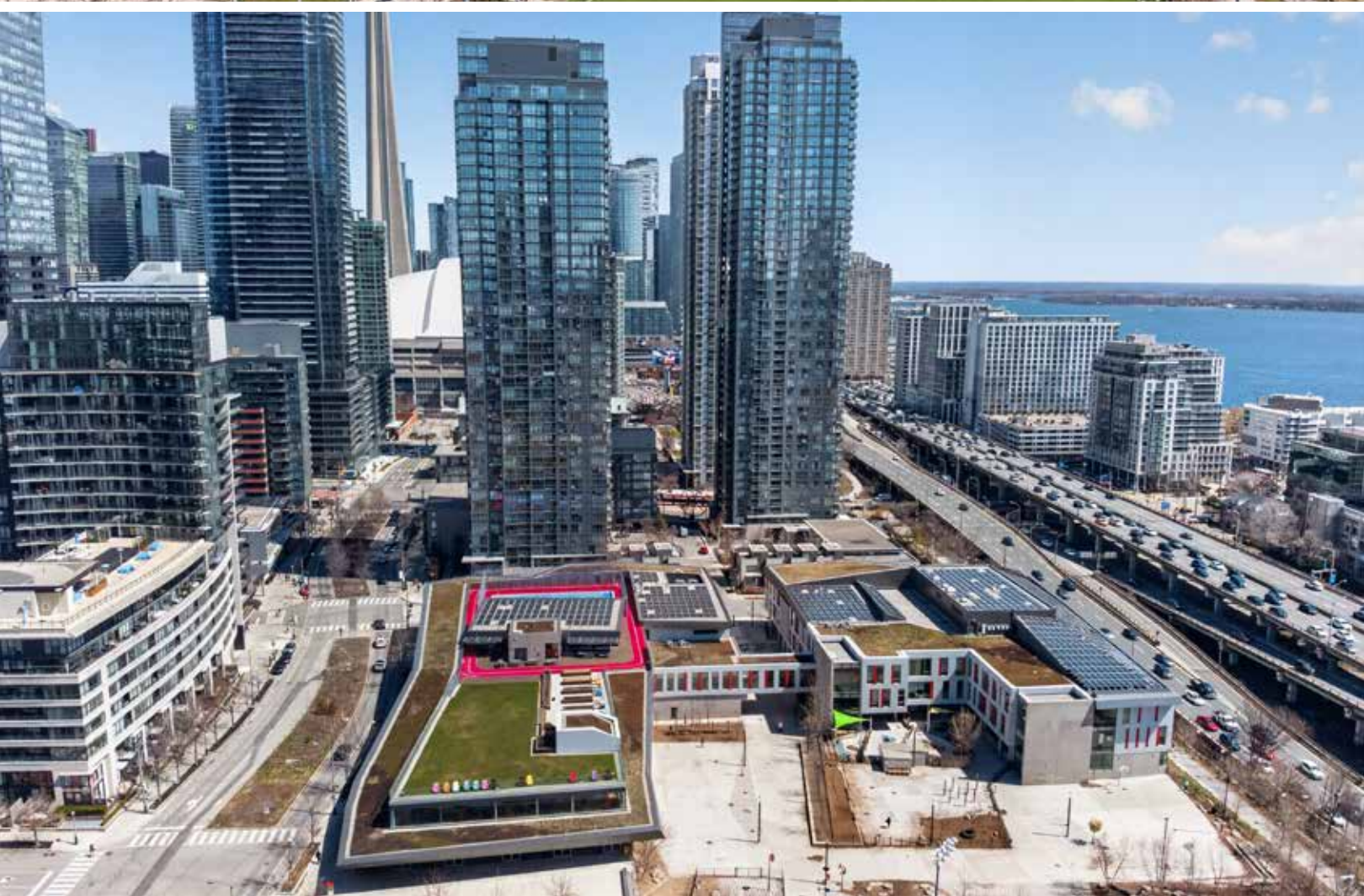


SULLIVAN

REAL ESTATE





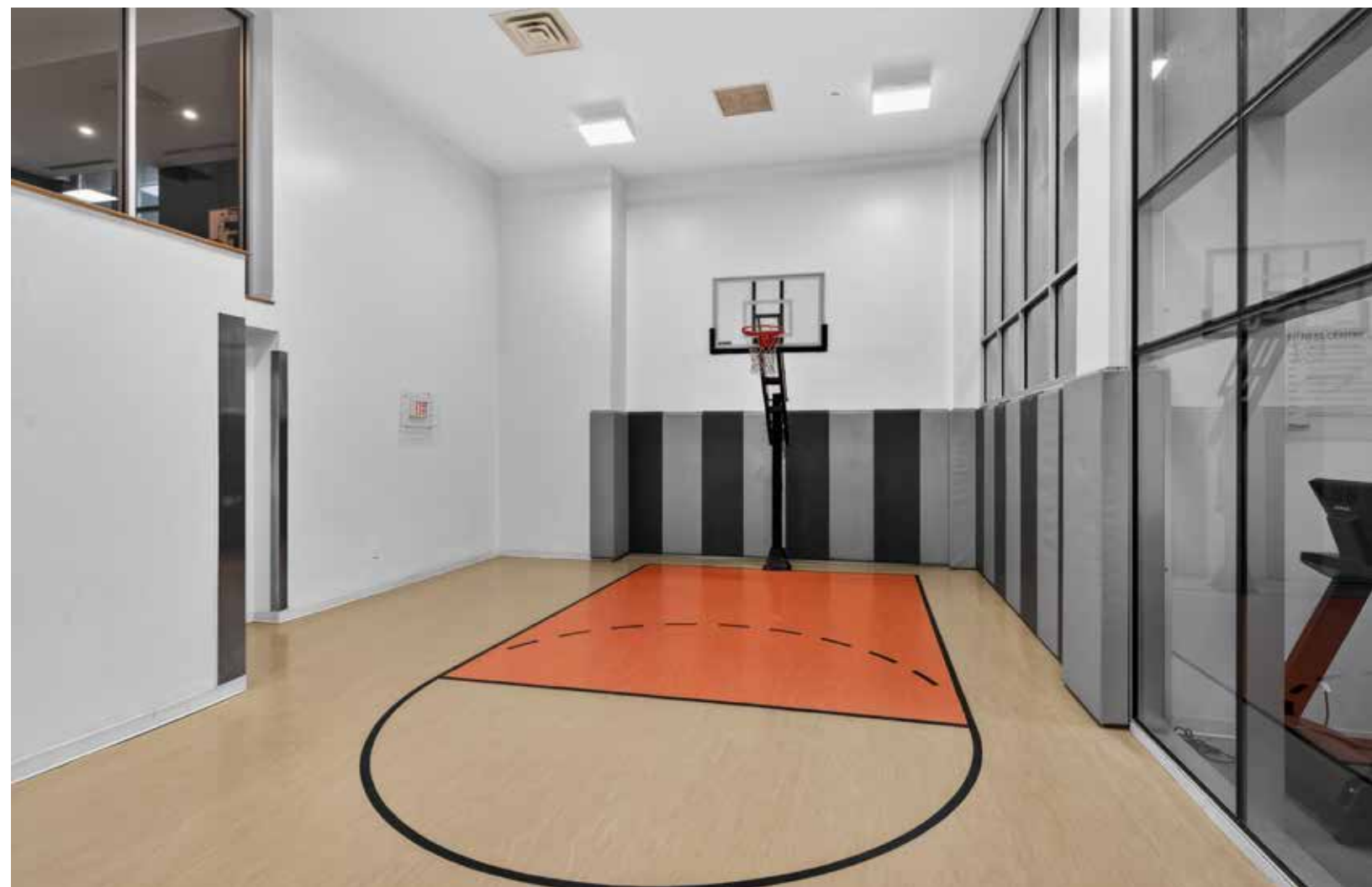












SULLIVAN

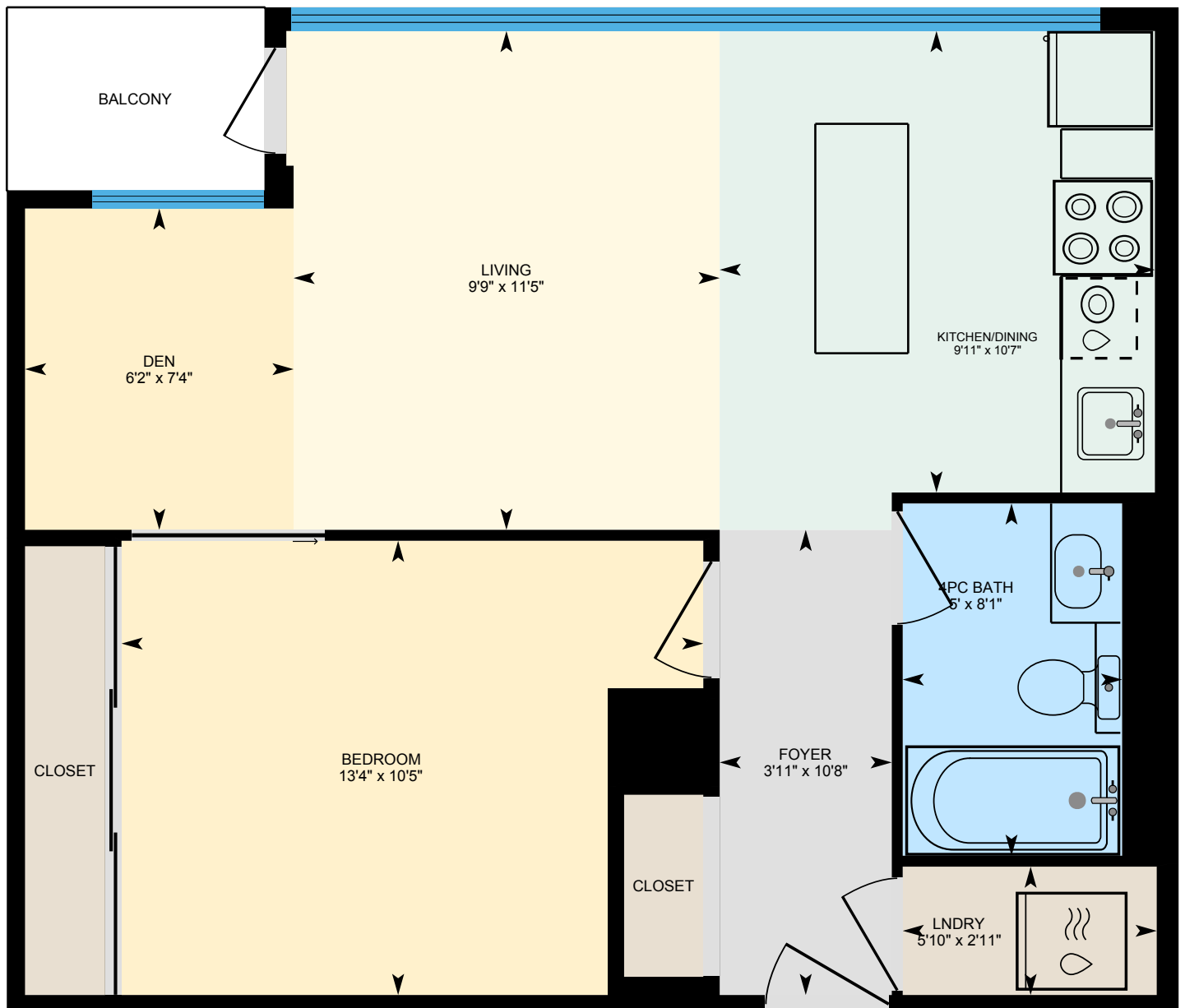
REAL ESTATE





623 - 15 Brunel Court, Toronto

Approx. 595 Sq.Ft. Plus Balcony



SULLIVAN

REAL ESTATE

Neighbourhood Report

623 - 15 Brunel Court, Toronto

SCHOOLS

With excellent assigned and local public schools very close to this home, your kids will get a great education in the neighbourhood.



Nearby Schools

Jean Lumb Public School

Designated Catchment School
Grades PK to 8
20 Brunel Court

ÉÉ Gabrielle-Roy

Designated Catchment School
Grades PK to 6
14 Pembroke St

Collège français secondaire

Designated Catchment School
Grades 7 to 12
100 Carlton St

Harbord Collegiate Institute

Designated Catchment School
Grades 9 to 12
286 Harbord St

Other Local Schools

Lord Lansdowne Junior Public School

Grades K to 6
33 Robert St

The Grove Community School

Grades PK to 6
108 Gladstone Ave

Central Technical School

Grades 9 to 12
725 Bathurst St

Central Toronto Academy

Grades 9 to 12
570 Shaw St

PARKS & REC

This home is located in park heaven, with 3 parks and 17 recreation facilities within a 20 minute walk from this address.



Canoe Landing Park & Recreation Centre

95 Fort York Blvd



 2 mins

Toronto Music Garden

479 Queens Quay West



 4 mins

Spadina Quay Wetlands

441 Queens Quay W



 4 mins

FACILITIES WITHIN A 20 MINUTE WALK

- | | |
|--------------------|-----------------------|
| 1 Playground | 1 Splash Pad |
| 1 Dog Park | 1 Beach |
| 1 Basketball Court | 1 Botanical Garden |
| 2 Sports Fields | 3 Trails |
| 2 Tracks | 1 Fitness/Weight Room |
| 1 Community Centre | 2 Gyms |

TRANSIT

Public transit is at this home's doorstep for easy travel around the city. The nearest street transit stop is only a 1 minute walk away, and the nearest rail transit stop is a 14 minute walk away.

Nearest Rail Transit Stop

St Andrew Station

 14 mins

Nearest Street Level Transit Stop

Bremner Blvd At Spadina Ave East Side

 1 min

SAFETY

With safety facilities in the area, help is always close by. Facilities near this home include a fire station, a police station, and a hospital within 2km.

Toronto Western Hospital (University Health Network)

399 Bathurst St

Fire Station

339 Queens Quay W

Police Station

255 Dundas St W





Property Details

Inclusions: Fridge, stove, built-in dishwasher, built-in microwave, washer & dryer and all electric light fixtures

Legal Description: UNIT 13, LEVEL 5, TORONTO STANDARD CONDOMINIUM PLAN NO. 1955 AND ITS APPURTENANT INTEREST; S/T EASEMENT FOR ENTRY FOR 2 YEARS AS IN AT1876837; THE DESCRIPTION OF THE CONDOMINIUM PROPERTY IS : PART OF BLOCK 1 PLAN 66M-2452, DESIGNATED AS PARTS 1, 3, 4, 6 AND 9 PLAN 66R-23732.; S/T AND T/W AN EASE AS SET OUT IN SCHEDULE A OF THE DECLARATION AS IN AT-1845824. CITY OF TORONTO

Taxes: \$2,647 for 2025

Possession: Immediate

Square Footage: Approximately 595 plus balcony

Deposit: 5%

Condo Fee: \$483.12 includes building insurance, common elements, exterior maintenance, heat, central air conditioning, water & visitor parking

Locker: Owned - Level D (P3) #55

Parking: Owned - Underground Level B (P1) #146

The information in this brochure is deemed to be accurate, but has not been independently verified, and is NOT guaranteed. All measurements are approximate. Items listed in this brochure are not automatically included unless listed as inclusions in the Agreement of Purchase and Sale. All information should be independently verified.

SULLIVAN

REAL ESTATE

SullivanRealEstate.ca



TOP 1% IN CANADA
For Royal LePage
2023



Royal LePage Real Estate Services Ltd.
Brokerage



Anita Sullivan

REALTOR® Broker

cell 905-466-4900

office 905-338-3737

anita@sullivanrealestate.ca

sullivanrealestate.ca



Matt Sullivan

REALTOR® Salesperson

cell 905-580-9196

office 905-338-3737

matt@sullivanrealestate.ca

sullivanrealestate.ca

