



141 Oakdale Drive, Oakville

SULLIVAN

— REAL ESTATE —





Welcome to 141 Oakdale Drive, a beautifully maintained home nestled on a quiet cul-de-sac with direct access to Oakdale Park, in one of Oakville's most sought-after, family-friendly neighborhoods. Just steps from the highly rated Sunningdale Public School—offering French immersion—this property offers an exceptional blend of comfort, style, and convenience—perfect for families, professionals, or anyone seeking the best of suburban living.

Inside, you'll find a bright and spacious layout with generous principal rooms and large windows that fill the home with natural light, creating a warm and inviting atmosphere. Impressive features include hardwood flooring, pot lights, and custom window coverings throughout. The premium custom kitchen is equipped with stainless steel appliances, quartz countertops, a striking backsplash, and abundant cabinetry and workspace, flowing seamlessly into the dining and living areas—perfect for both everyday living and entertaining. The living room offers a harmonious blend of warmth and sophistication, creating an inviting space for casual family time or formal gatherings. The dining room is enhanced with built-in cabinetry, combining charm with practical storage. The expansive family room is a true highlight, featuring wall-to-wall windows, built-in shelving, and a cozy gas fireplace—an ideal spot to relax or gather with family and friends.

Upstairs 4 good-sized bedrooms offer everyday comfort & practicality. One room provides exceptional versatility — ideal as a home office, playroom, or easily converted back into a 4th bedroom to suit your needs. A well-appointed 4-piece bathroom with medicine cabinet and convenient hallway linen/storage closet complete this level.

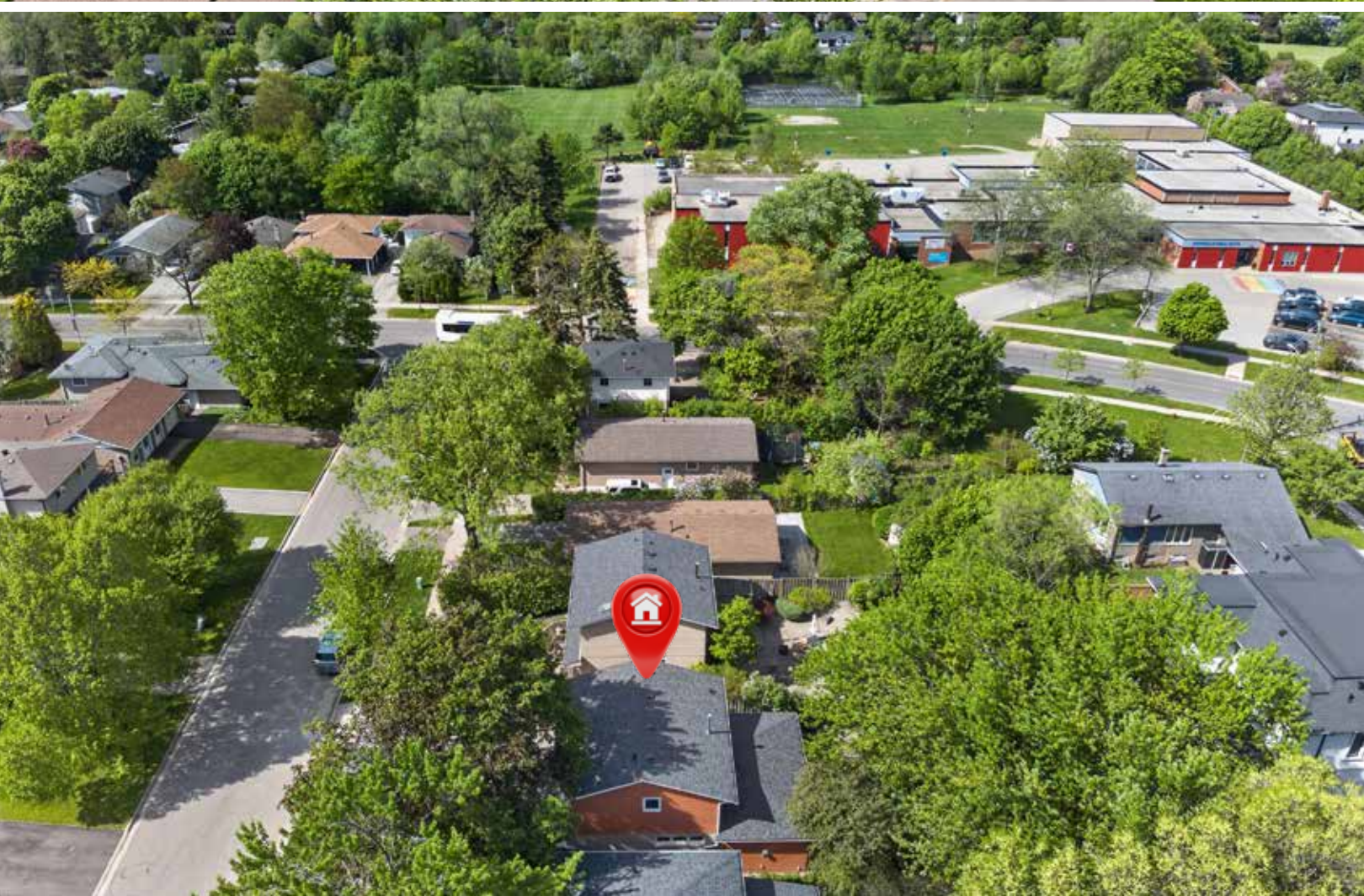
The lower level adds valuable living space with a recreation room, a three-piece bathroom, and plenty of storage, along with potential for further development.

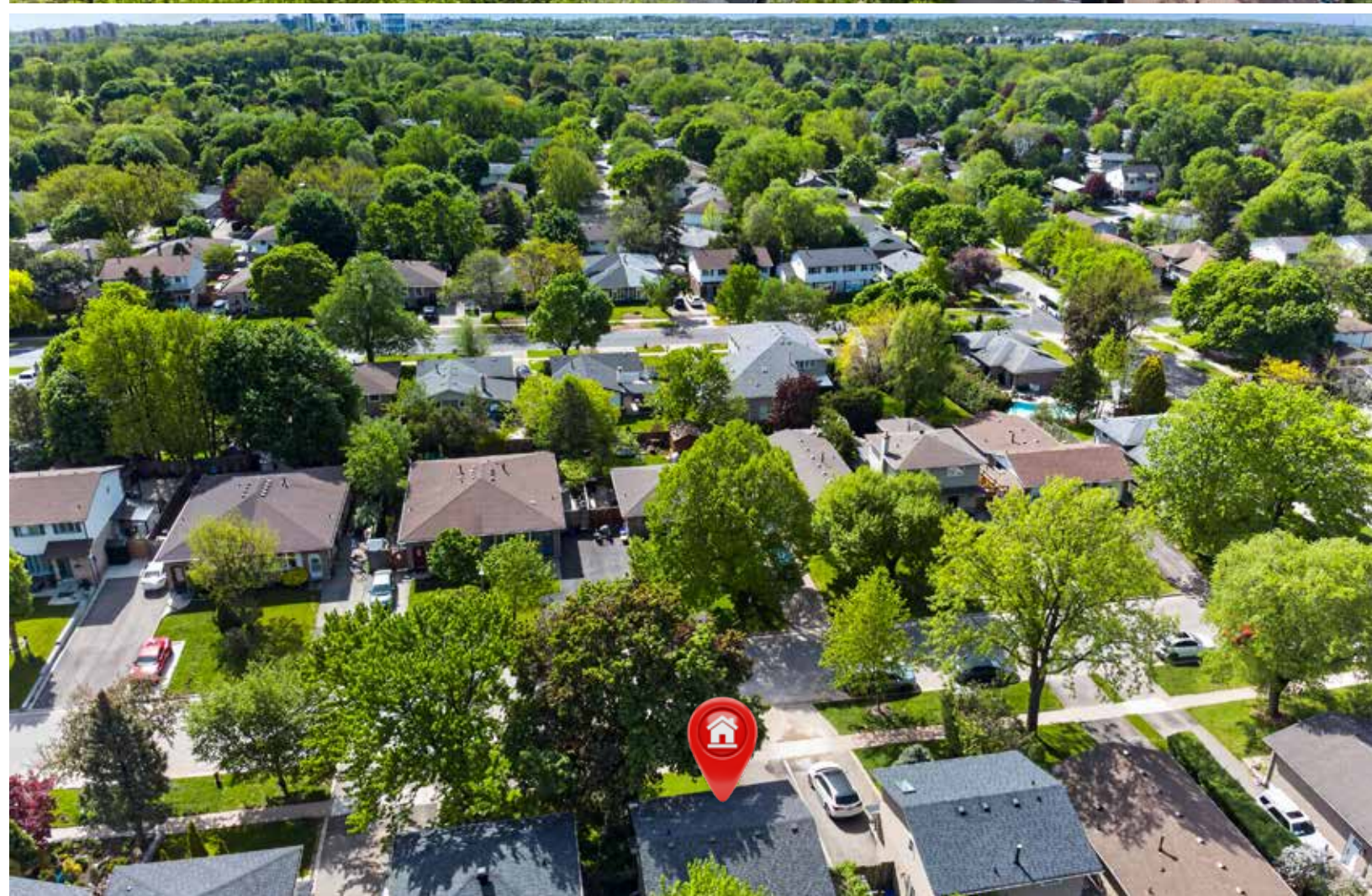
Enjoy the outdoors in a private backyard retreat offering a spacious wood deck ideal for relaxing and summer entertaining, complete with two garden sheds for convenient storage.

Updates include windows and doors (2017), furnace and air conditioner (2022), and roof (2025).

Conveniently located near parks, shopping, restaurants, transit, and major highways, this home provides easy access to everything Oakville has to offer.

Comfort, style, and convenience all in one prime location!







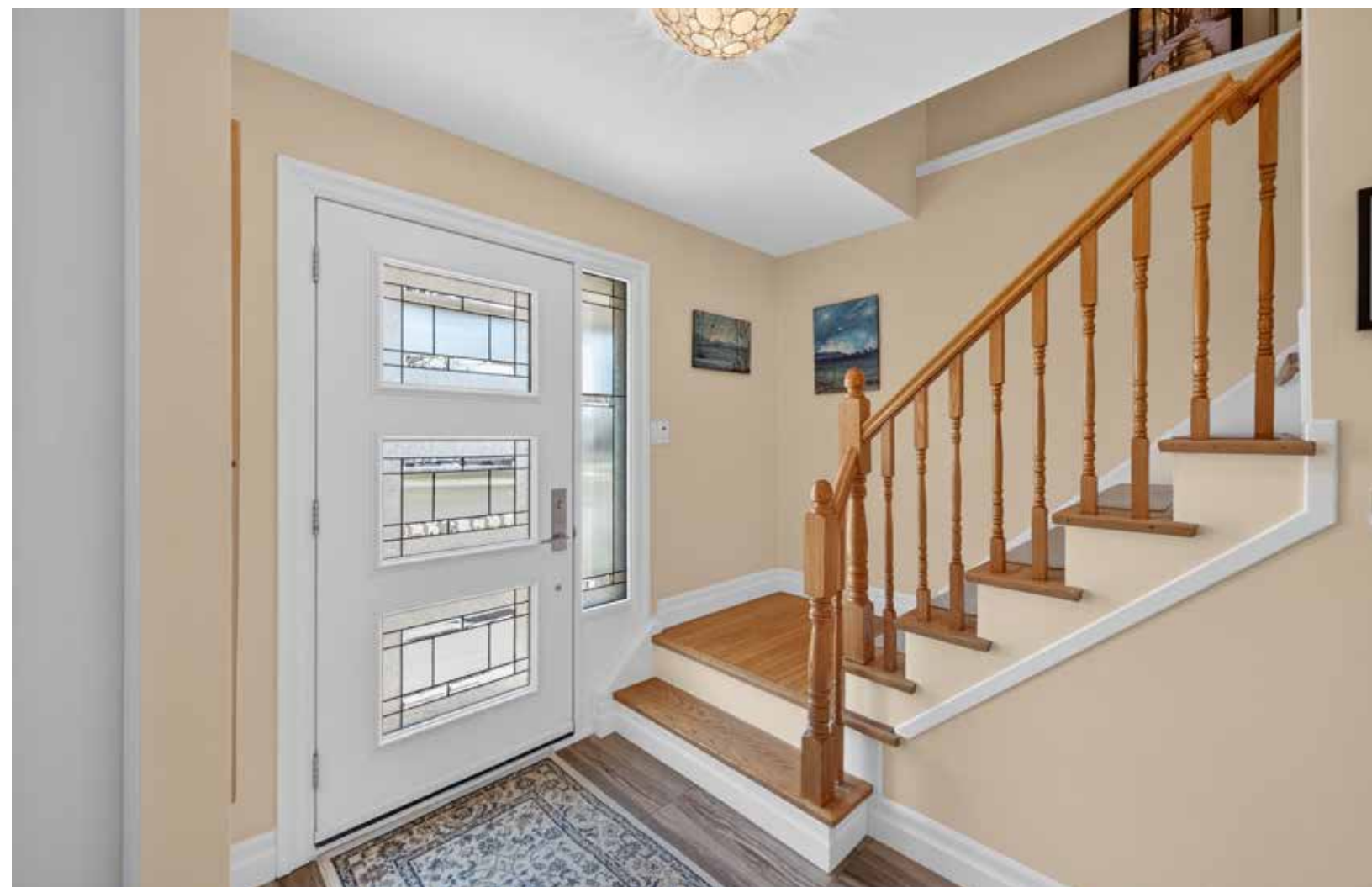




SULLIVAN
REAL ESTATE





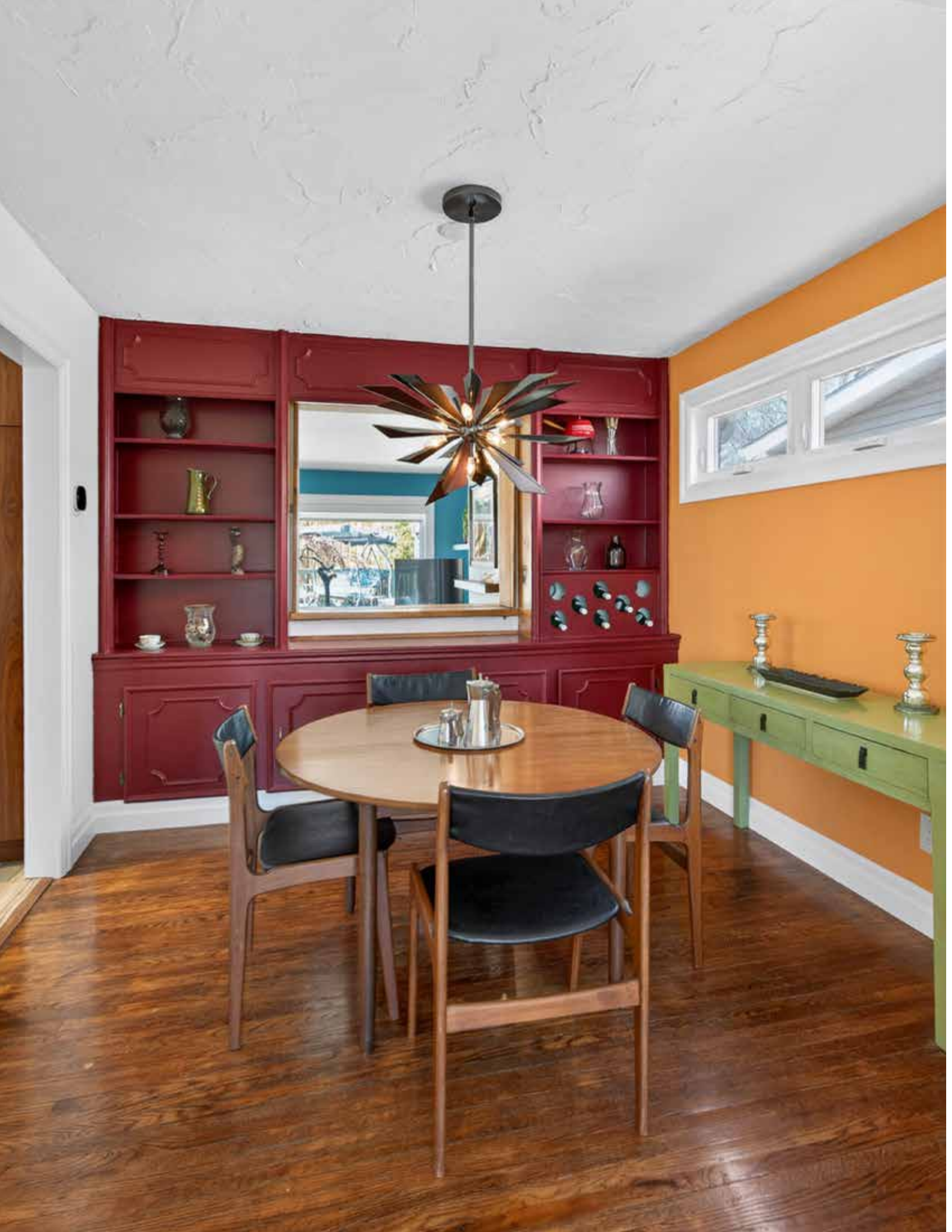


SULLIVAN

REAL ESTATE













SULLIVAN

REAL ESTATE



SULLIVAN

REAL ESTATE







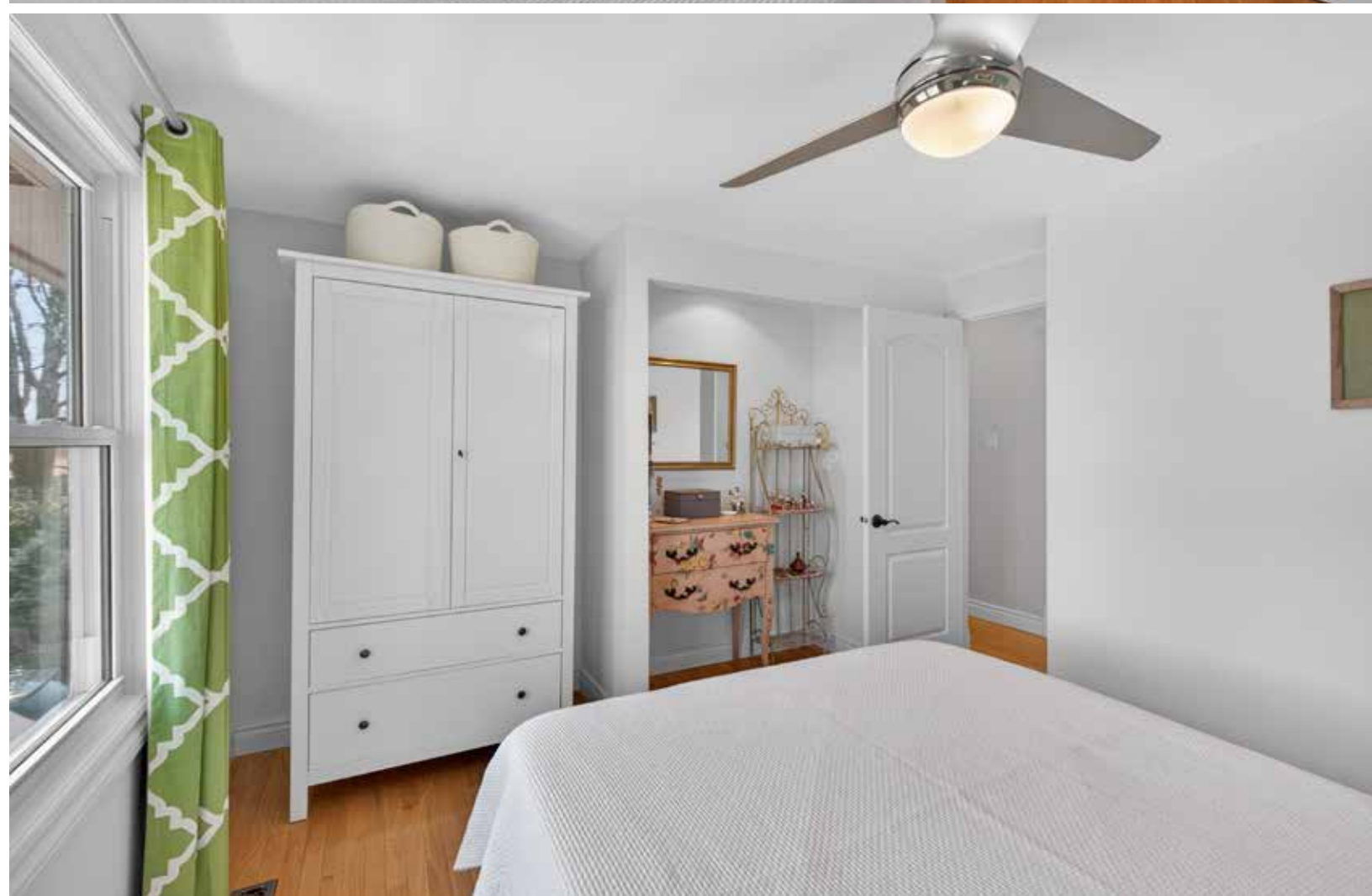


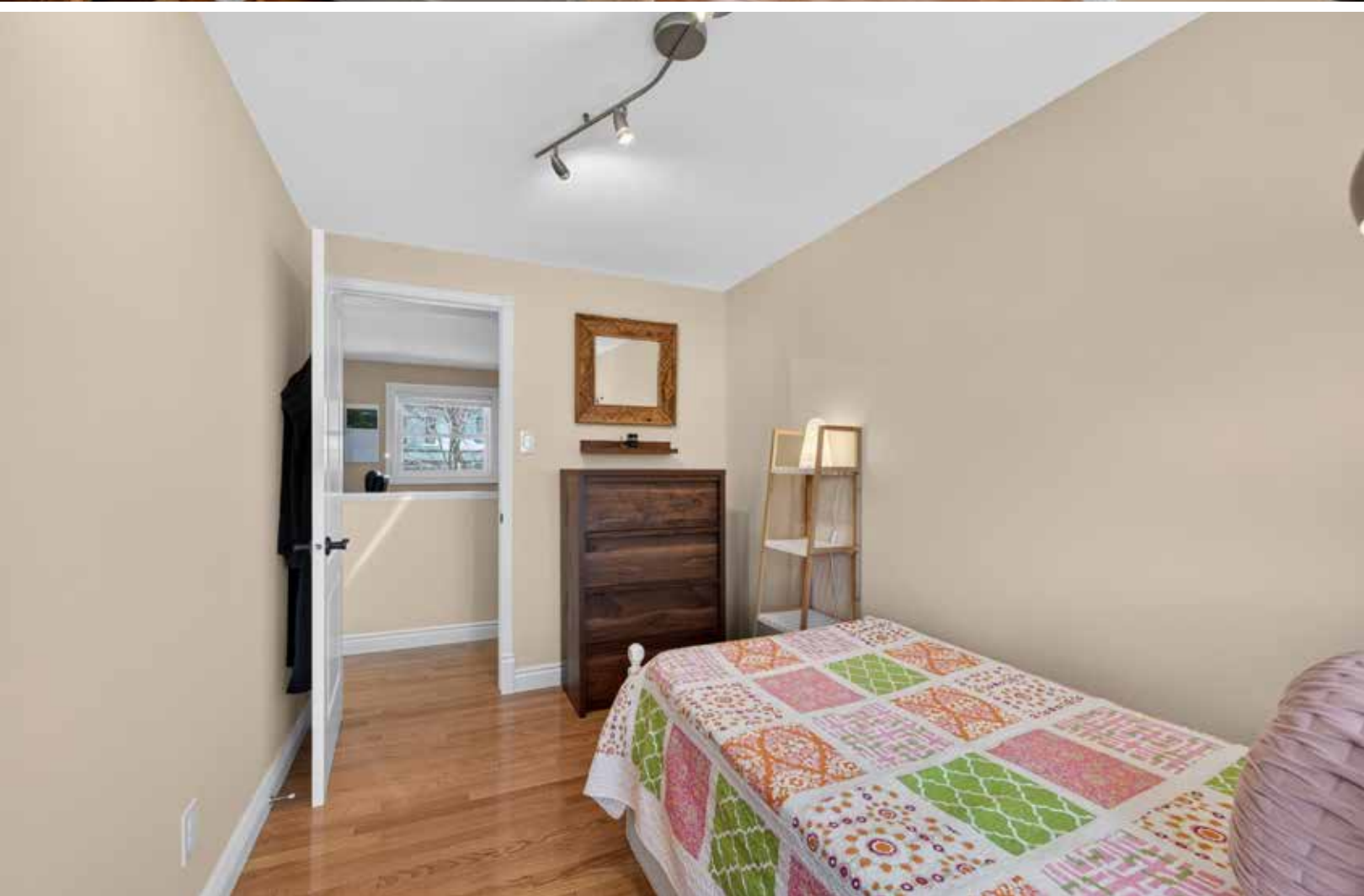
SULLIVAN

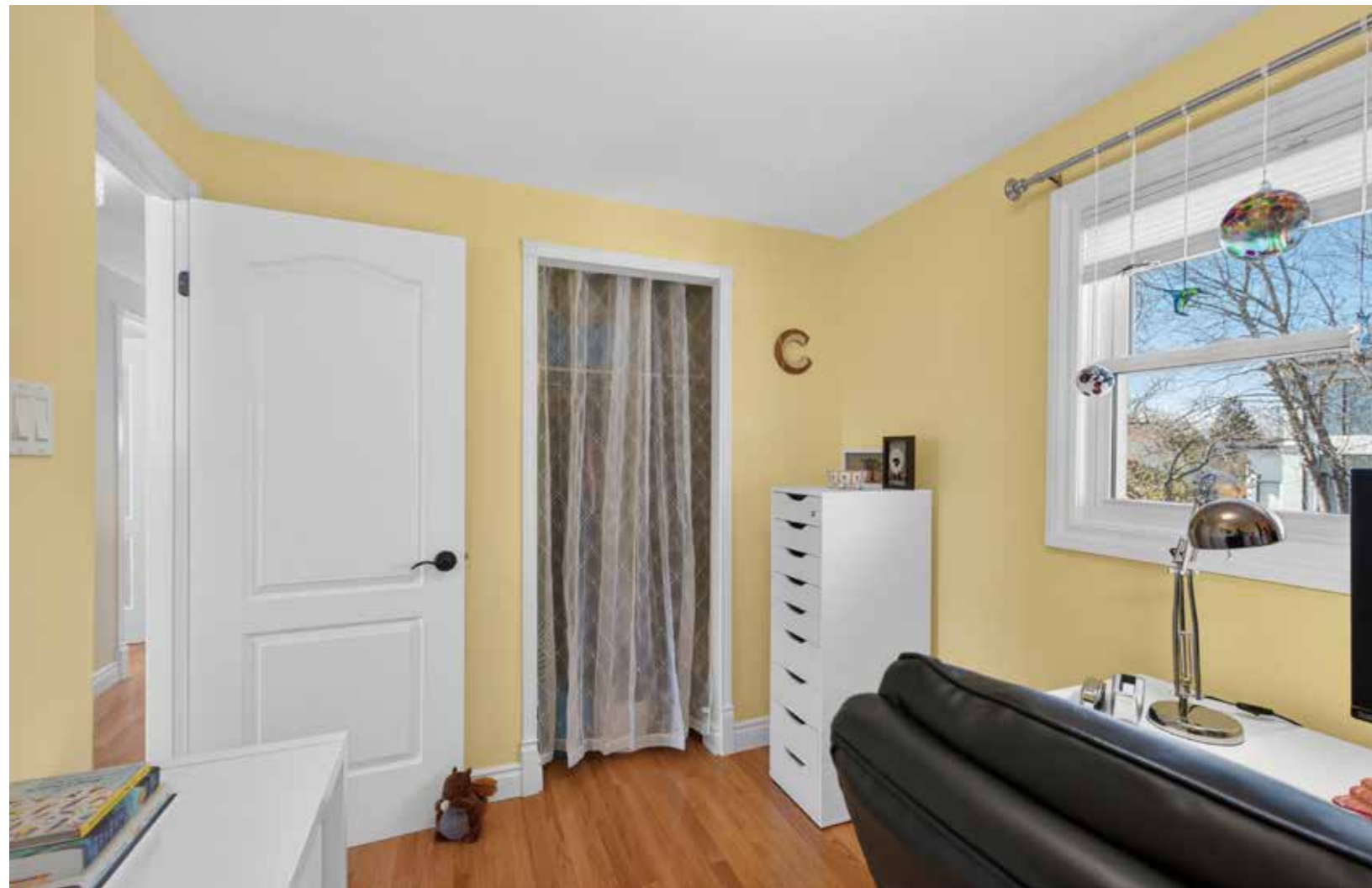
REAL ESTATE













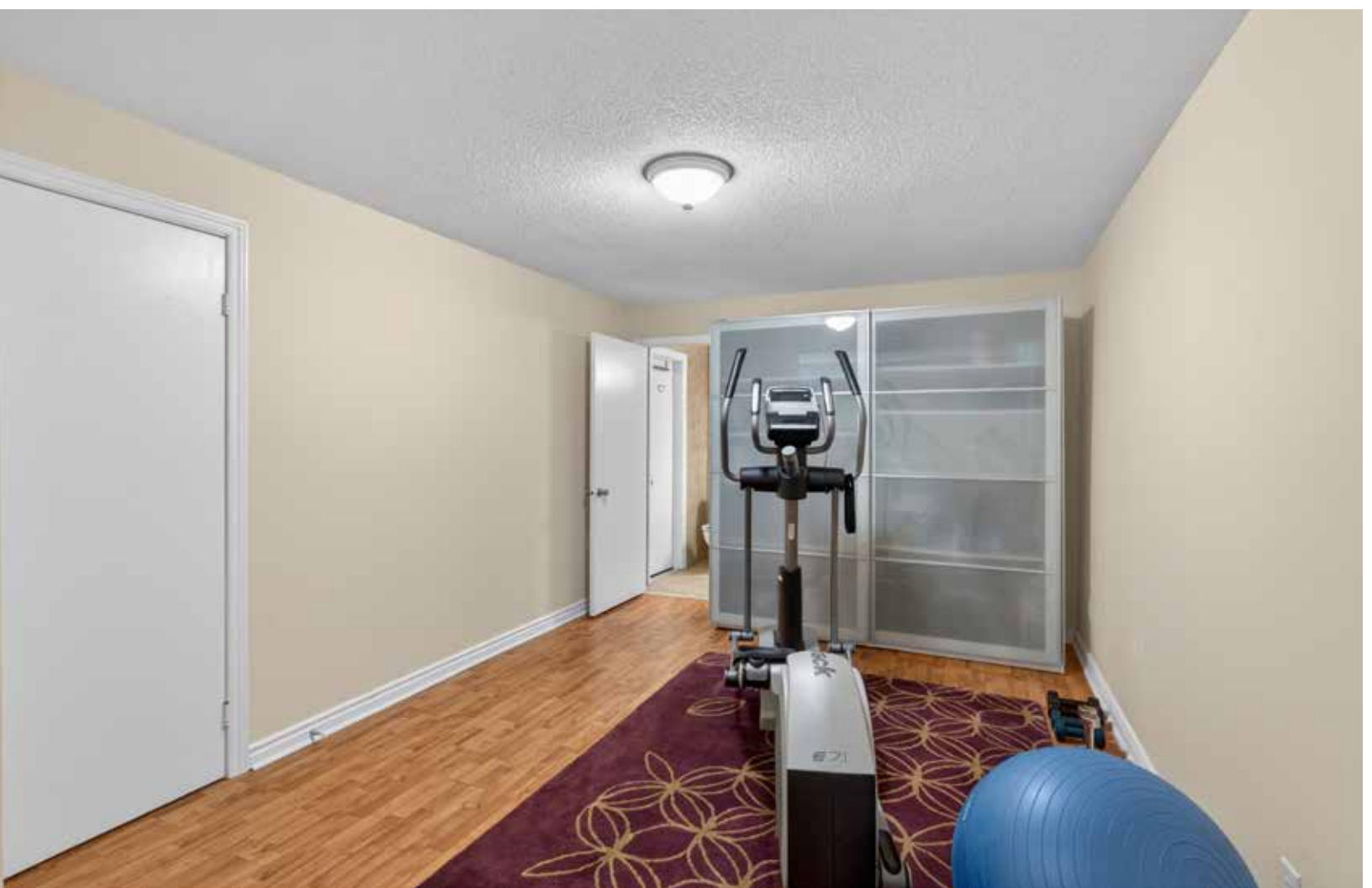
SULLIVAN

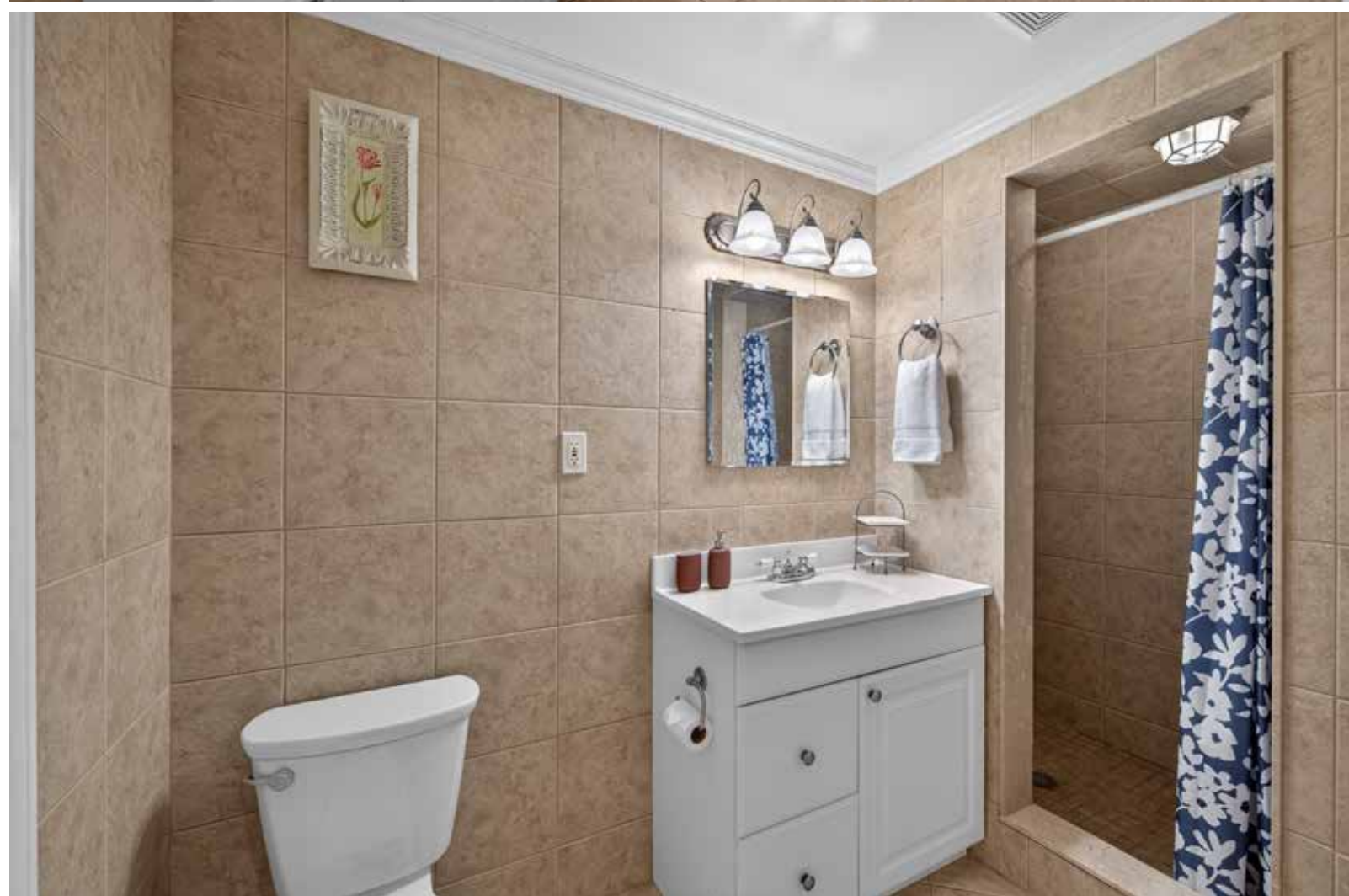
REAL ESTATE









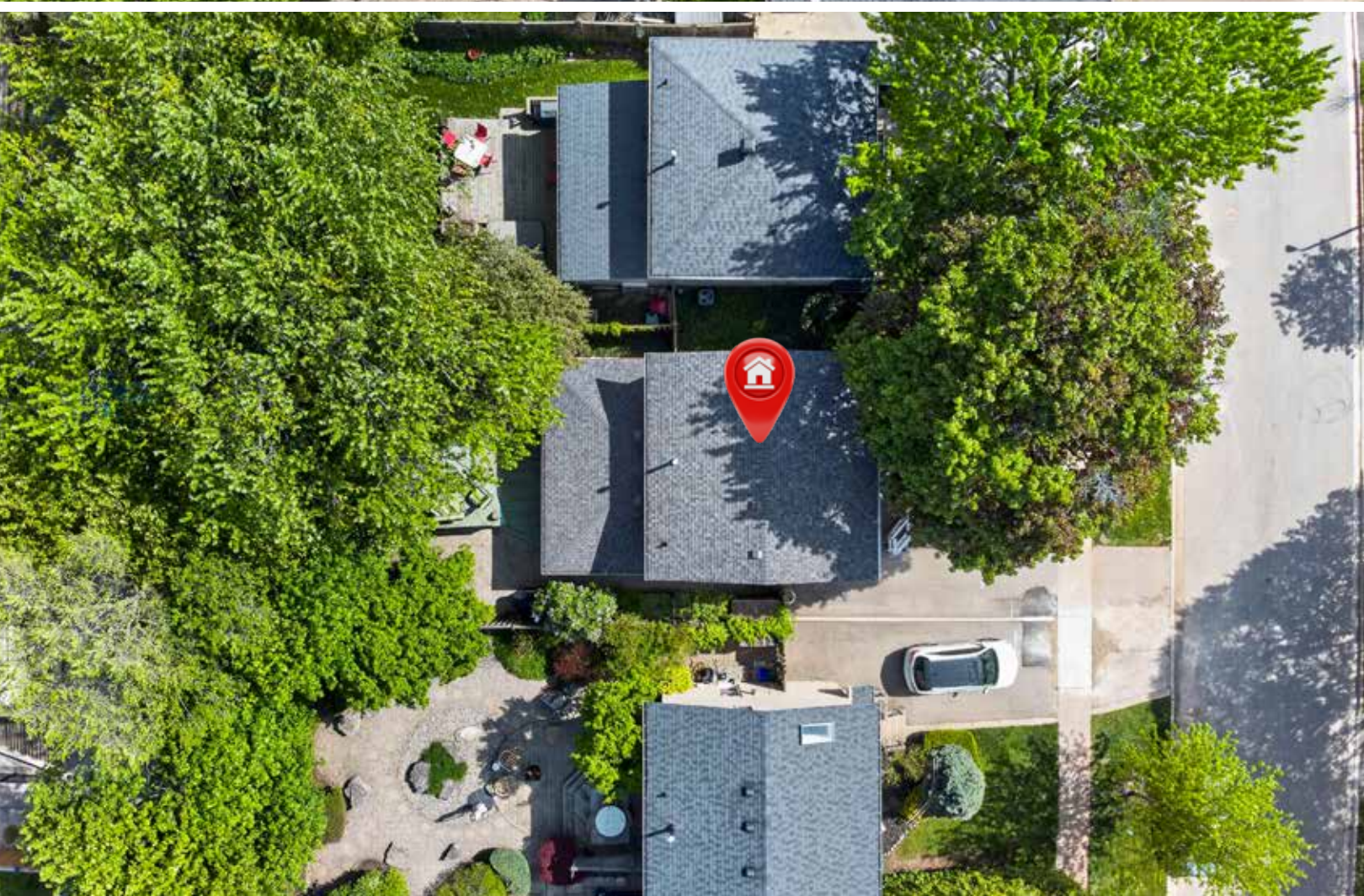












Neighbourhood Report

141 Oakdale Drive, Oakville

SCHOOLS

With excellent assigned public schools very close to this home, your kids will get a great education in the neighbourhood.



Nearby Schools

Sunningdale PS

Designated Catchment School
Grades 2 to 8
1434 Oxford Ave

ÉS Gaétan Gervais

Designated Catchment School
Grades 7 to 12
1055 McCraney St E

White Oaks SS

Designated Catchment School
Grades 9 to 12
1330 Montclair Dr

Montclair PS

Designated Catchment School
Grades PK to 8
1285 Montclair Dr

ÉÉ du Chêne

Designated Catchment School
Grades PK to 6
150 Ridge Dr

PARKS & REC

This home is located in park heaven, with 3 parks and 13 recreation facilities within a 20 minute walk from this address.



Oxford Park

1406 Oxford Avenue



1 min



Oakdale Park

80 McCraney Street West



2 mins



Sunningdale Park

1470 Pembroke Drive



2 mins

FACILITIES WITHIN A 20 MINUTE WALK

3 Playgrounds 2 Sports Fields
2 Tennis Courts 1 Sports Court
2 Basketball Courts 2 Trails
2 Ball Diamonds

TRANSIT

Public transit is at this home's doorstep for easy travel around the city. The nearest rail transit stop is only 2.3 km away, and the nearest street transit stop is a 2 minute walk away.



Nearest Rail Transit Stop

Oakville



Nearest Street Level Transit Stop

Oxford Ave + McCraney St West



2 mins

SAFETY

With safety facilities in the area, help is always close by. Facilities near this home include a fire station, a police station, and a hospital within 4km.



Halton Healthcare - Oakville Trafalgar Memorial Hospital

3001 Hospital Gate



Fire Station

2024 Sixth Line



Police Station

95 Oak Walk Drive

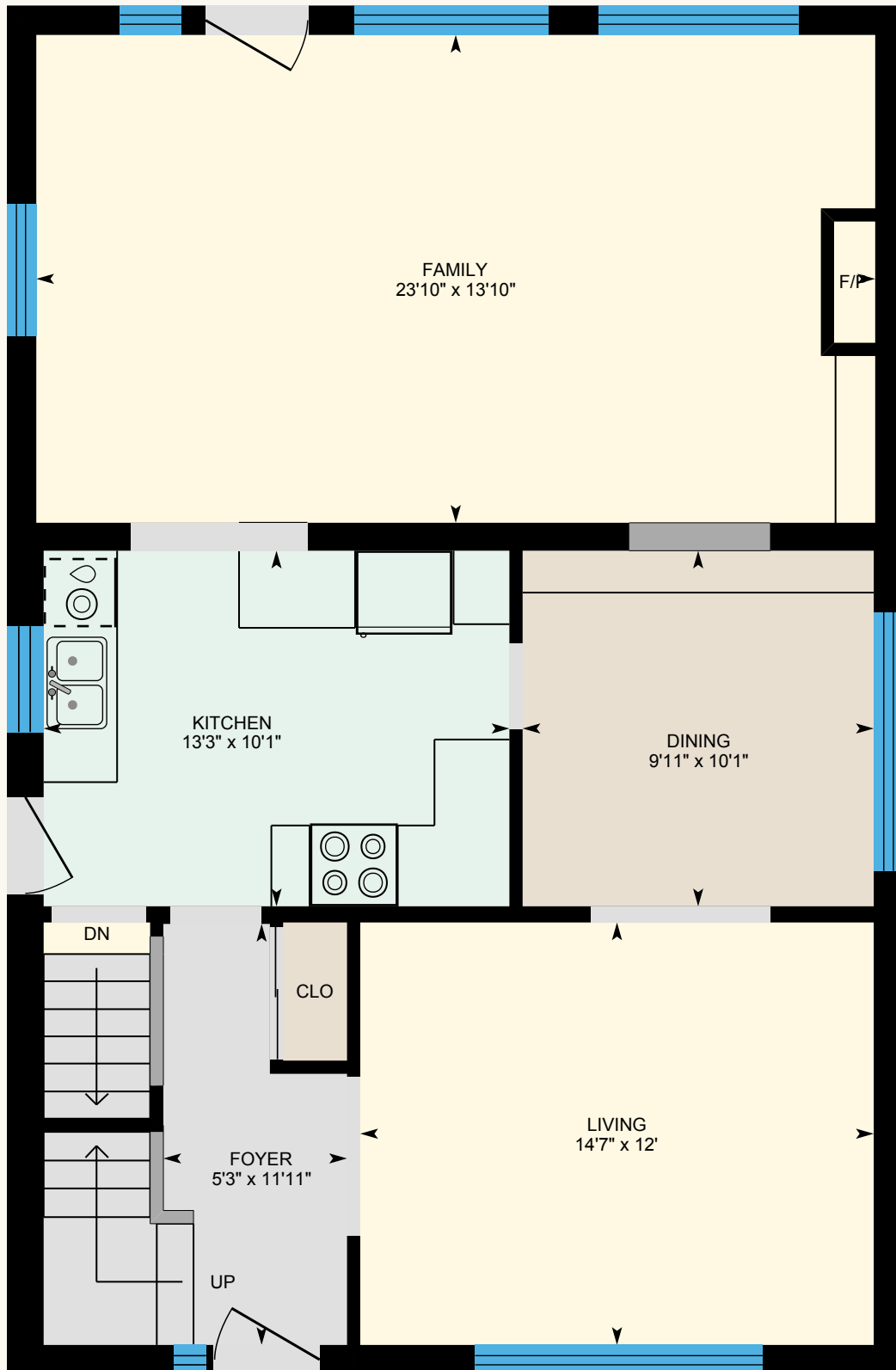
SULLIVAN

REAL ESTATE

Floor Plan

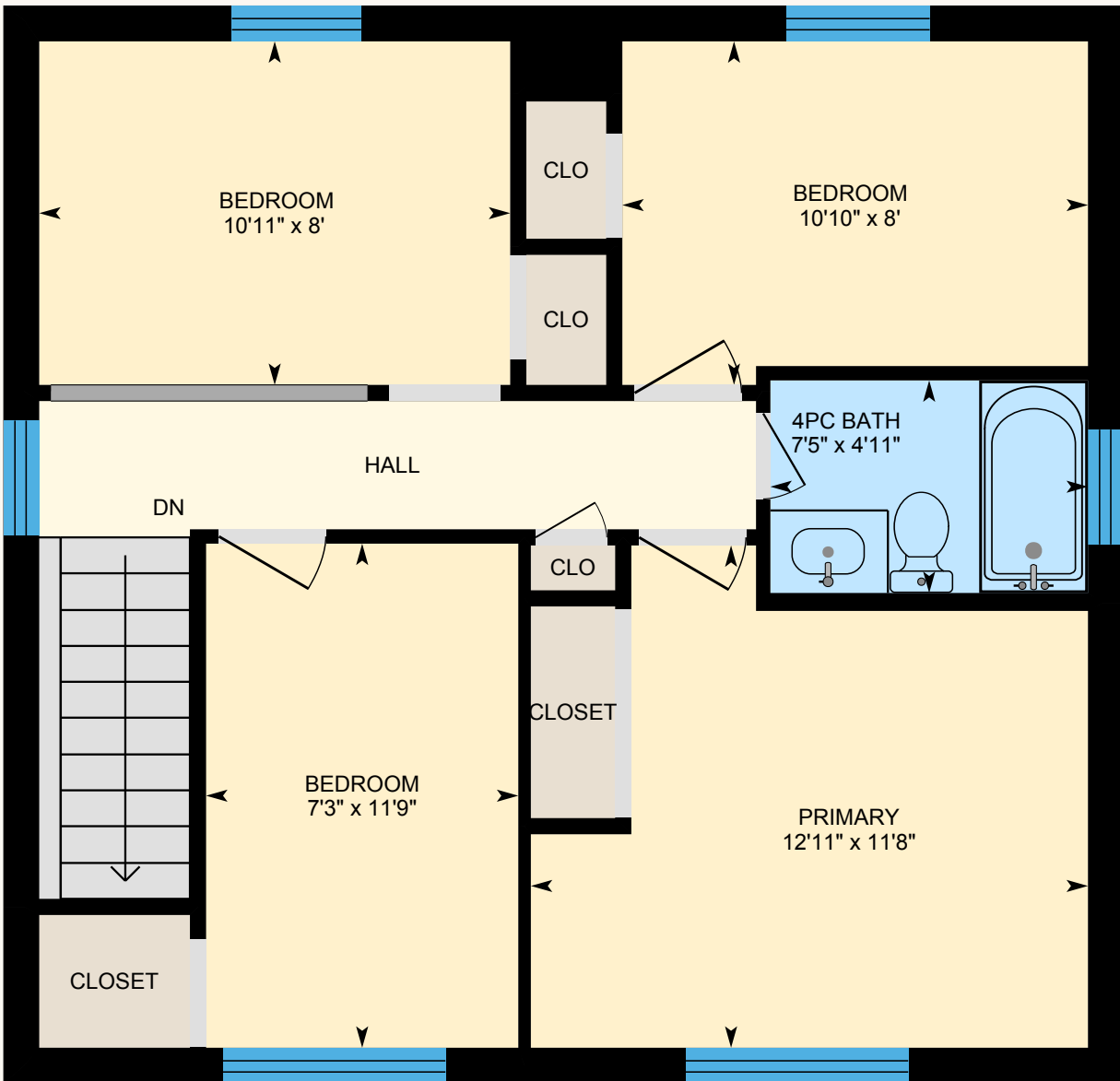
Approx. 1,633 Sq.Ft. Plus Finished Basement

Main Level



Floor Plan

Upper Level

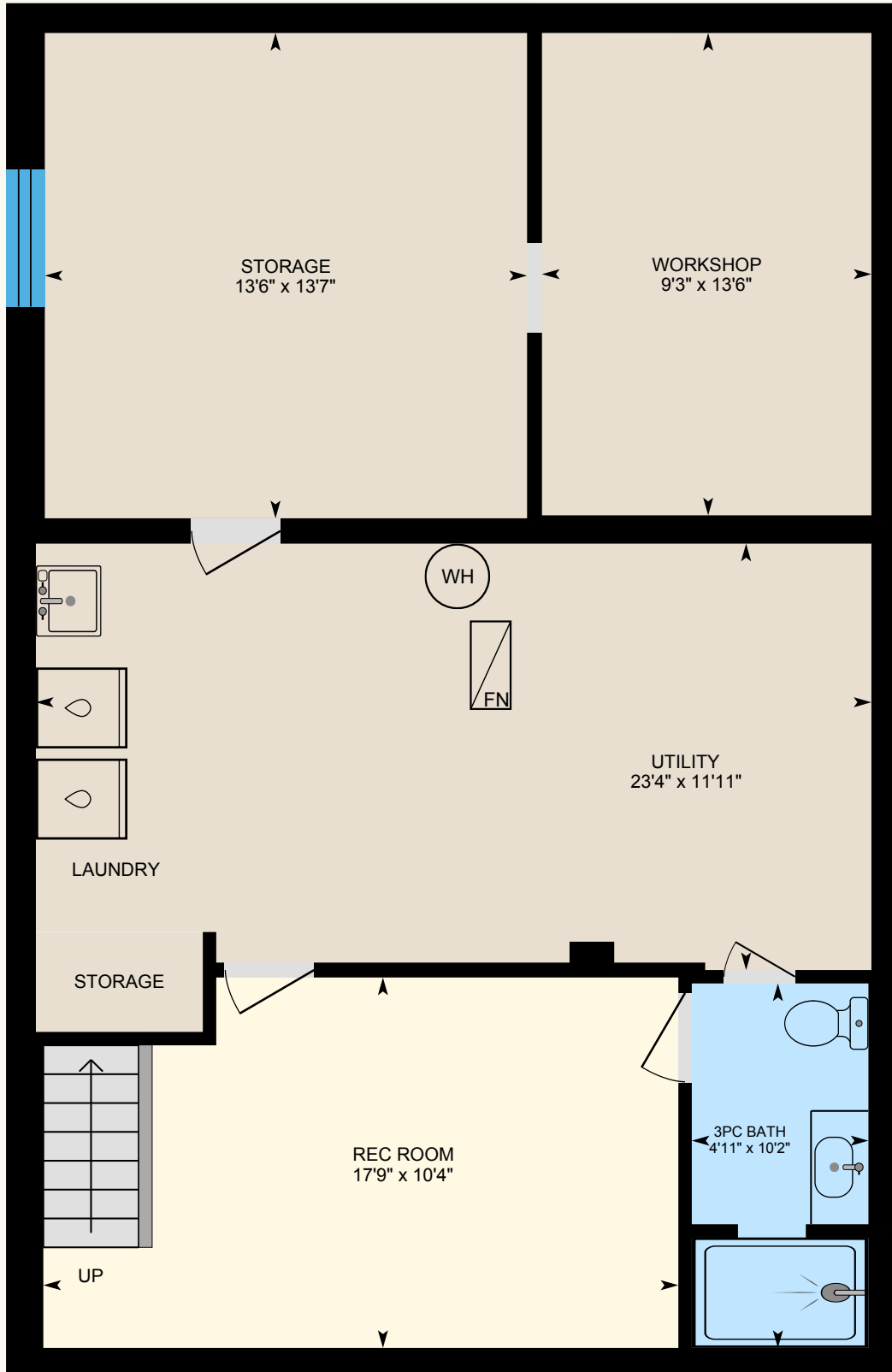


SULLIVAN

REAL ESTATE

Floor Plan

Lower Level





Property Details

Inclusions: Fridge, gas stove, built-in dishwasher, built-in microwave, washer & dryer, all electric light fixtures including ceiling fan, all window coverings, cabinet in rec room, workbench in basement, deck boxes, bbq and sheds

Exclusions: Dining room chandelier, all wall-mounted lights, speakers in family room, bookcases in family & living rooms, cd cabinet in living room & freezer in basement

Legal Description: PCL 73-1, SEC M34 ; LT 73, PL M34 ; S/T H5912 TOWN OF OAKVILLE

Property Taxes: \$4,123.00 for 2025

Possession: Flexible

Deposit: 5%

Lot Size: Approximately 40.07 feet X 109.48 feet

Square Footage: Approximately 1,633 plus finished basement

Rental Items: Hot water tank

The information in this brochure is deemed to be accurate, but has not been independently verified, and is NOT guaranteed. All measurements are approximate. Items listed in this brochure are not automatically included unless listed as inclusions in the Agreement of Purchase and Sale. All information should be independently verified.

SULLIVAN

REAL ESTATE

SullivanRealEstate.ca



TOP 1% IN CANADA
For Royal LePage
2023



Royal LePage Real Estate Services Ltd.
Brokerage



Anita Sullivan

REALTOR® Broker

cell 905-466-4900

office 905-338-3737

anita@sullivanrealestate.ca

sullivanrealestate.ca



Matt Sullivan

REALTOR® Salesperson

cell 905-580-9196

office 905-338-3737

matt@sullivanrealestate.ca

sullivanrealestate.ca

