



#1601 - 2180 Marine Drive, Oakville

SULLIVAN

— REAL ESTATE —





Live lakeside and enjoy beautiful views of Lake Ontario, Bronte Village and the Niagara Escarpment. This sought-after 'Cambridge' updated corner suite boasts 1830 square feet of enviable living space, designed for comfort and relaxation. Presenting floor-to-ceiling windows with California style shutters showcasing views from every window.

The grand foyer sets an impressive tone upon entry. Spacious living and dining areas provide the perfect setting for both entertaining and everyday living. A bright, versatile den offers flexible space to suit your needs. At the heart of the home, the kitchen is thoughtfully designed with abundant cabinetry offering exceptional storage and organization, complemented by ample counter space for effortless meal preparation. A charming breakfast area, bathed in natural light, provides the perfect spot to enjoy morning coffee or casual family meals in a warm and inviting setting.

The expansive primary bedroom serves as a private retreat with generous closet space and a four-piece ensuite. The second bedroom is also thoughtfully sized, creating a bright and comfortable space ideal for guests or family. A sun-filled, multi-purpose solarium delivers year-round enjoyment and adaptable living space. Completing the home is a three-piece bathroom and a convenient laundry/storage room. 1 owned underground parking space and exclusive-use locker are included. (The windows have recently been replaced with energy-efficient LowE glass.)

Welcome to the prestigious 'Ennisclare II on the Lake' complex, set on 5 acres of stunning waterfront property in Bronte Village. Enjoy walking distance to the lake, harbor, trails, restaurants and cafes, amenities and shopping. This exceptional adult lifestyle community offers a wealth of amenities, including 24-hour security, social events, an indoor pool and hot tub, exercise rooms, saunas, a clubhouse overlooking the lake, party rooms, billiards, golf range, table tennis, workshop, art room, squash court, tennis court, outdoor seating areas, car wash, bike storage and visitor parking. (Dogs are not permitted and the complex is smoke-free.)

Experience exclusive, resort-style waterfront living!



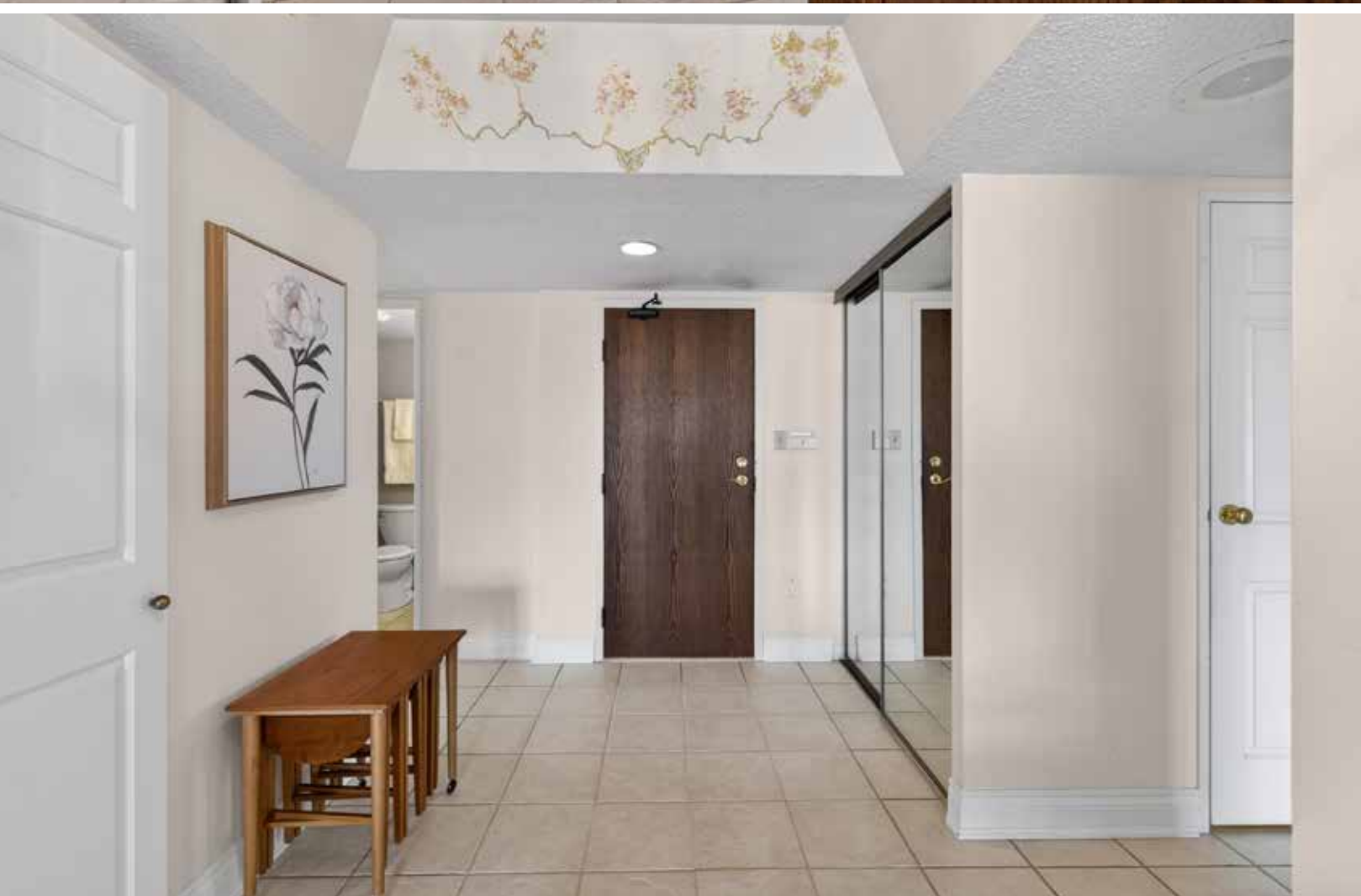






SULLIVAN

REAL ESTATE





Foyer











SULLIVAN
— REAL ESTATE —











Dining Room







Solarium

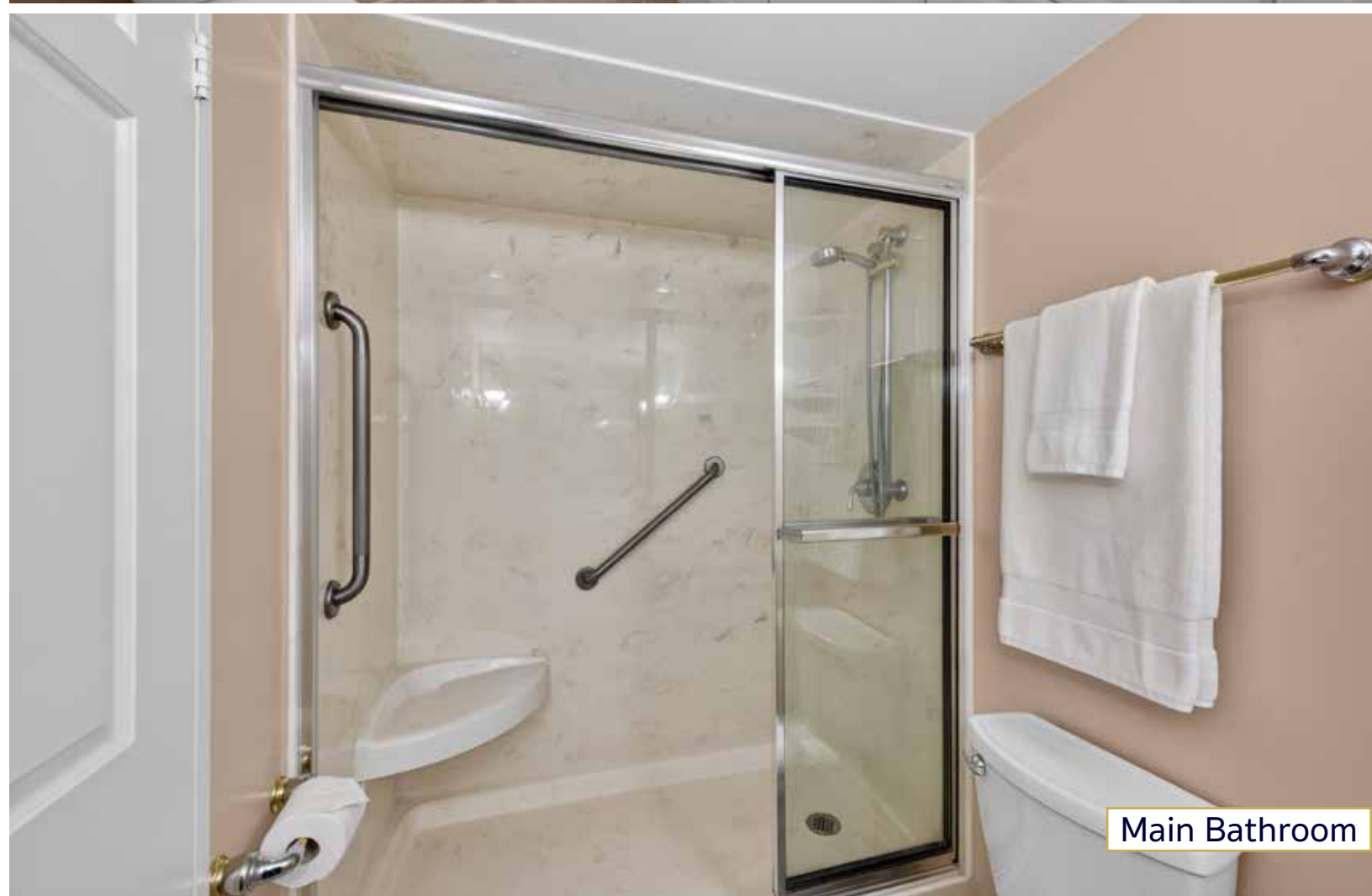






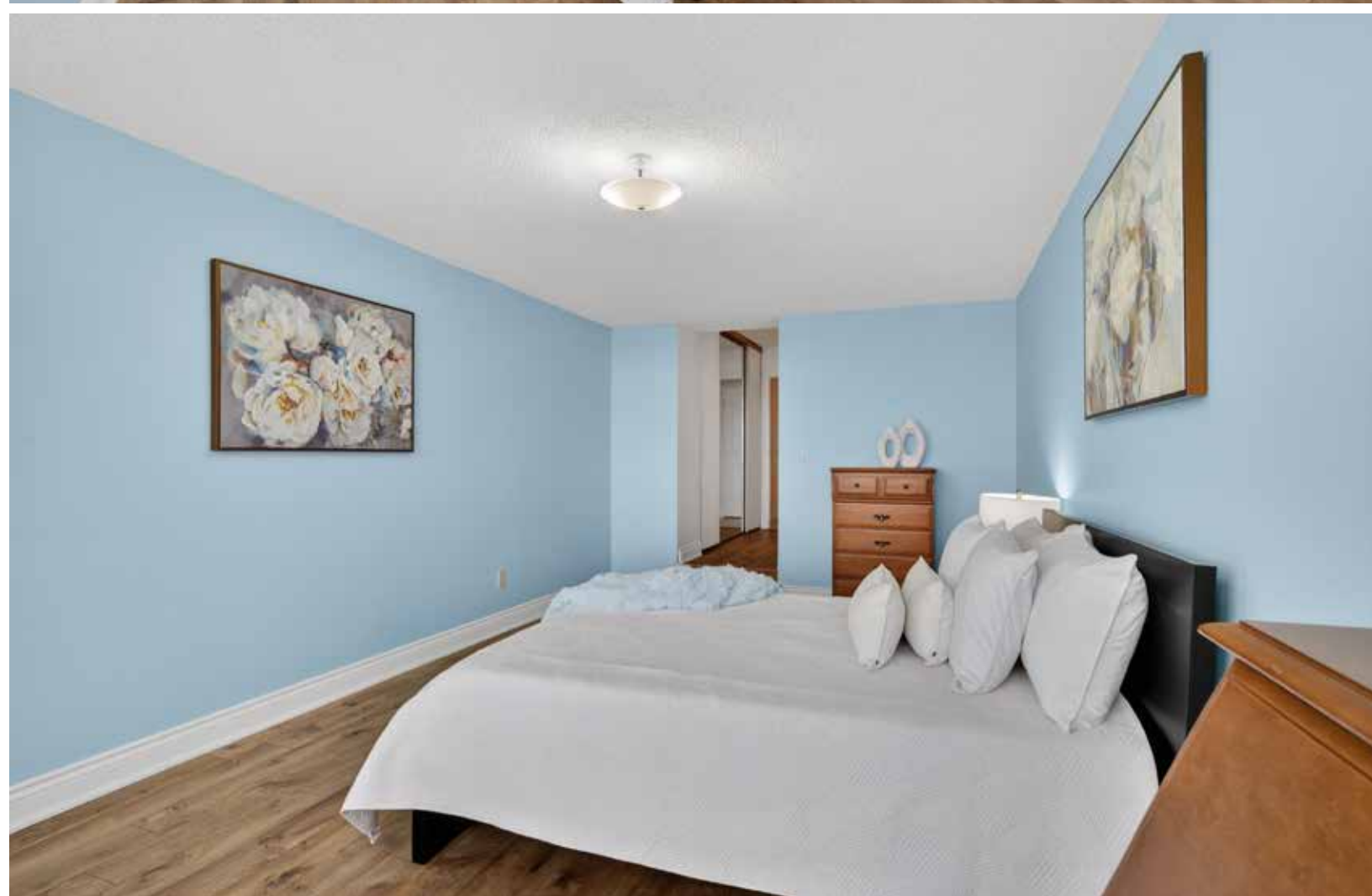
Den/Family Room





Main Bathroom







Primary Bedroom





SULLIVAN

REAL ESTATE



Ensuite



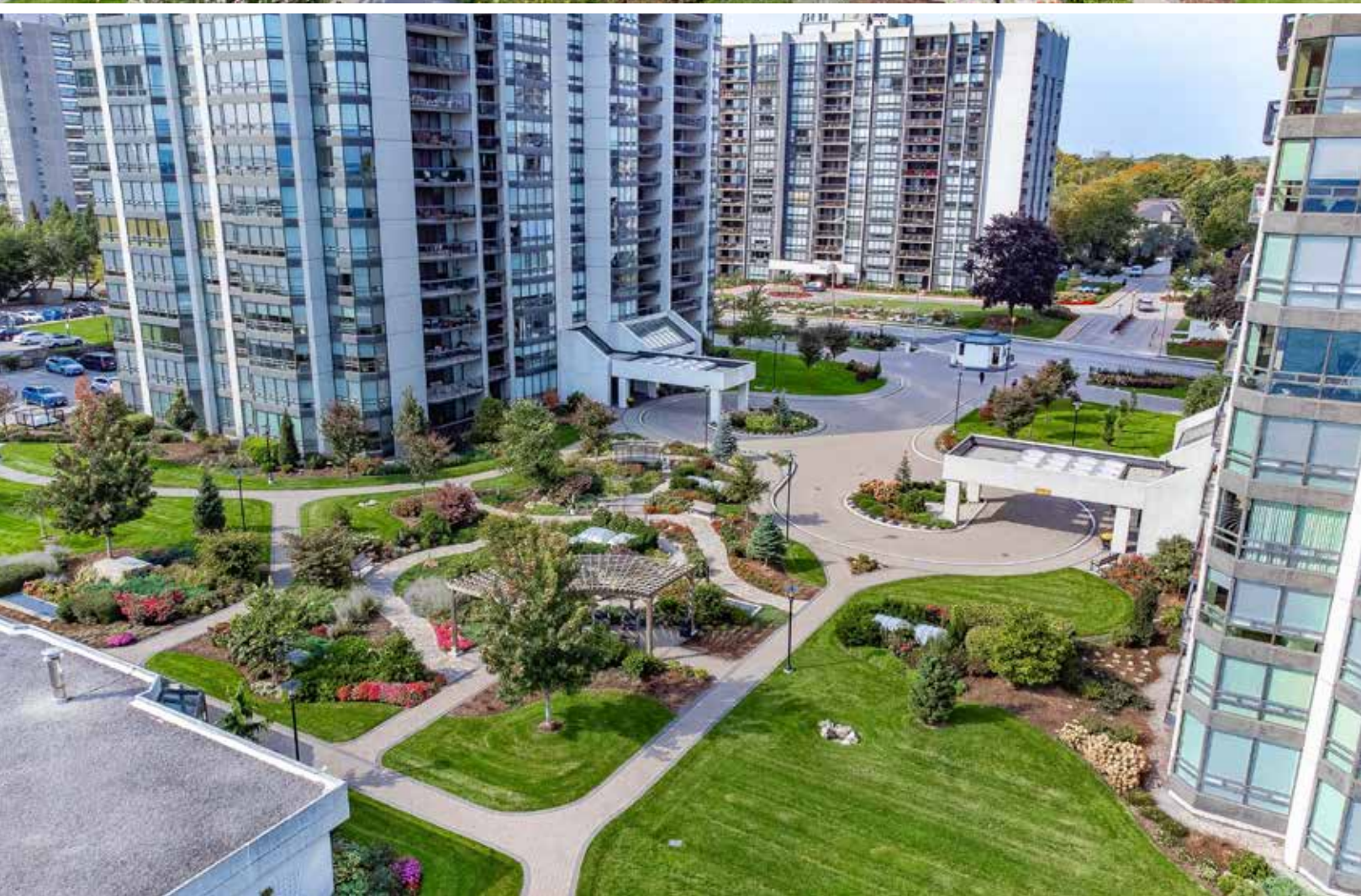
SULLIVAN
— REAL ESTATE —























2170 & 2180 Extensive

- 24hr security & gate house
- Club house with kitchen
- Party rooms with kitchen
- Indoor pool and hot tub
- Men's & ladies exercise room
- Men's & ladies saunas
- Indoor golf range & squash
- Organized social activities



Marine Drive Amenities

- Woodworking shop
- Art room
- Billiards room
- Table tennis room
- Library
- Tennis court
- Car wash
- Bike storage



#1601 - 2180 Marine Drive, Oakville

Approx. 1,830 Square Feet

The Cambridge '01'





Property Details

Inclusions: Fridge, stove, built-in dishwasher, washer & dryer, all electric light fixtures & all window coverings

Legal Description: UNIT 1, LEVEL 15, HALTON CONDOMINIUM PLAN NO. 114

Taxes: \$5,767.00 for 2025

Possession: Flexible

Square Footage: Approximately 1,830 Square Feet

Deposit: 5%

Condo Fee Includes: \$1,768.23 includes building insurance, common elements, exterior maintenance, heat, hydro, water, central air conditioning, basic cable TV, high speed internet & visitor parking

Pets: Restricted – No dogs

NO SMOKING COMPLEX

Owned Underground Parking: #25B

Locker: Exclusive use - Room #1 Locker #5

The information in this brochure is deemed to be accurate, but has not been independently verified, and is NOT guaranteed. All measurements are approximate. Items listed in this brochure are not automatically included unless listed as inclusions in the Agreement of Purchase and Sale. All information should be independently verified.

SULLIVAN

— REAL ESTATE —

SullivanRealEstate.ca



TOP 1% IN CANADA
For Royal LePage
2023



Royal LePage Real Estate Services Ltd.
Brokerage



Anita Sullivan

REALTOR® Broker

cell 905-466-4900
office 905-338-3737
anita@sullivanrealestate.ca
sullivanrealestate.ca



Matt Sullivan

REALTOR® Salesperson

cell 905-580-9196
office 905-338-3737
matt@sullivanrealestate.ca
sullivanrealestate.ca

