



2173 Deyncourt Drive, Burlington

SULLIVAN

— REAL ESTATE —





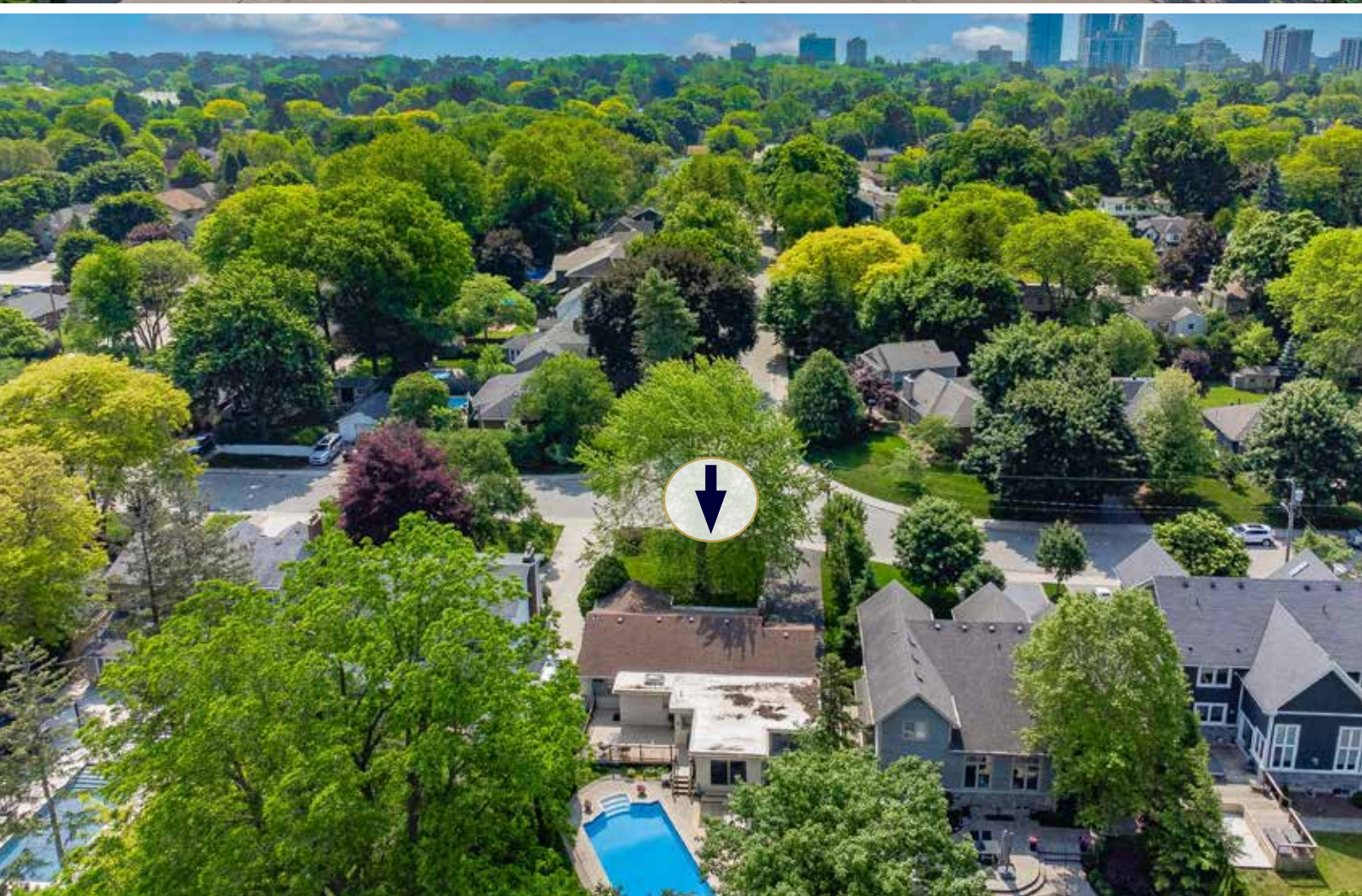
Location, location, location! This gem is settled on a stunning private 64' x 150' lot on a highly sought-after, family-friendly street in one of downtown Burlington's most desirable neighbourhoods, providing the ultimate in convenience and lifestyle. Just moments from the vibrant downtown core, you'll have quick access to shopping, dining, Lake Ontario, Spencer Smith Waterfront Park, beach and scenic trails, top-rated schools, public transit, and highways. Plus, enjoy proximity to a dog park, library, place of worship, playgrounds, and the GO station—everything you need is within reach!

Step inside and discover a home that exudes warmth and atmosphere. The well-equipped kitchen features a skylight that fills the room with natural light, along with an abundance of cabinets, pull out drawers, built-in shelves and quartz counters. The walkout leads you to the private backyard complete with an inground pool, patio, large deck, and lush landscaping – a perfect setting for both entertaining and relaxation.

This updated three-bedroom bungalow offers the ease of single-level living. The living room provides warmth with a cozy fireplace and large bay window. The open-concept formal dining room, with elegant French doors for added privacy, seamlessly connects to the spacious family room, where wall-to-wall sliding glass doors bring the outdoors in, offering a gorgeous view of the private backyard oasis. The primary bedroom is a serene retreat, featuring a large closet and a 4-piece ensuite with a soaker tub and linen closet for extra storage. Two additional generously sized bedrooms provide ample space for family or guests. The main floor is complete with a 4-piece bathroom, a convenient powder room, and plenty of storage—ideal for both entertaining and everyday living.

The lower level offers even more space to enjoy, with a large recreation room complete with a bar, an office that can easily be converted into a fourth bedroom, a 2-piece bathroom, and ample storage. Parking is a breeze with room for up to five vehicles in the driveway. The home's front and back sprinkler systems add to the modern convenience.

Experience the comfort and ease of main floor living in this fantastic home—truly a must-see!

















SULLIVAN
REAL ESTATE









SULLIVAN
REAL ESTATE

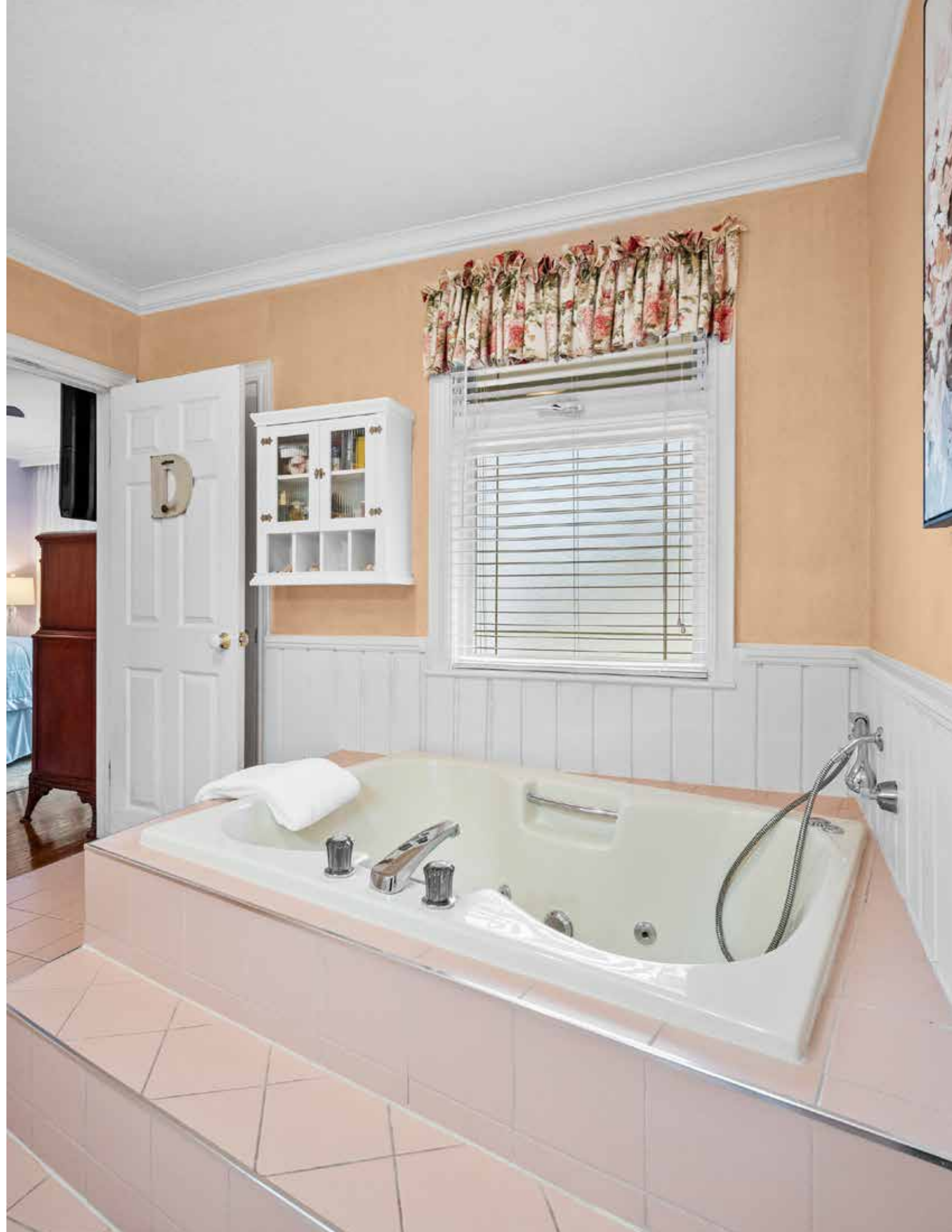










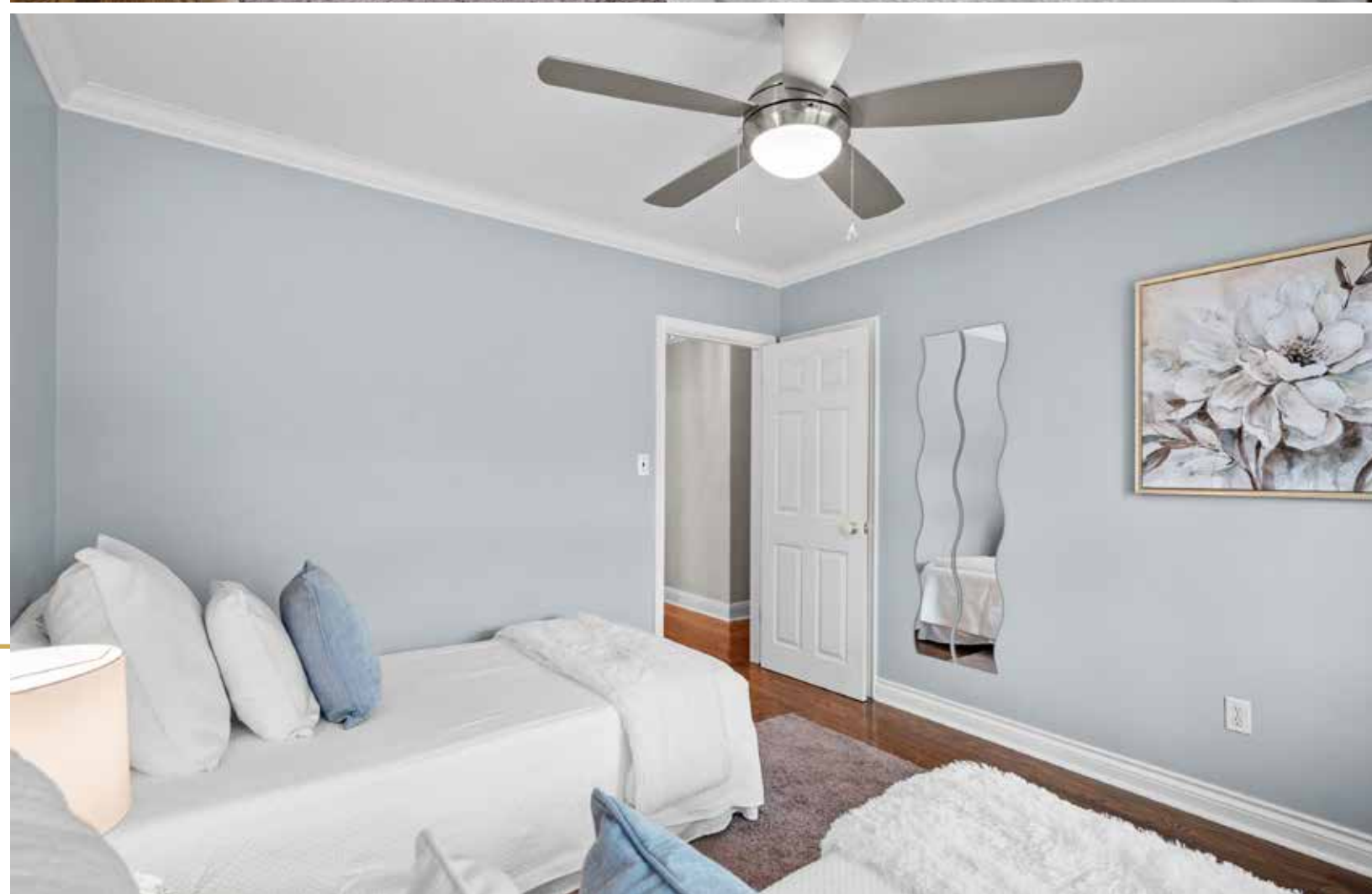




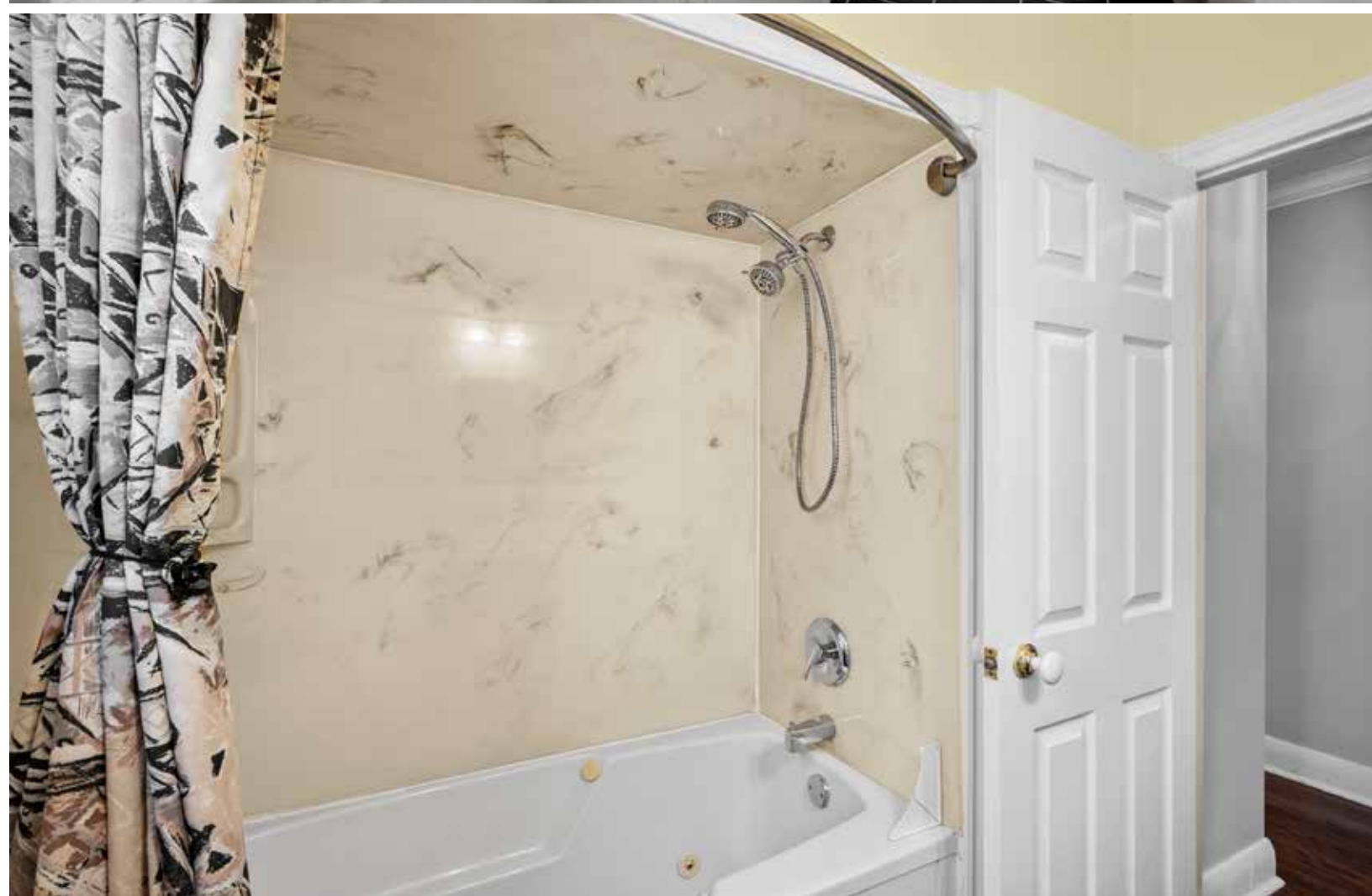




SULLIVAN
REAL ESTATE

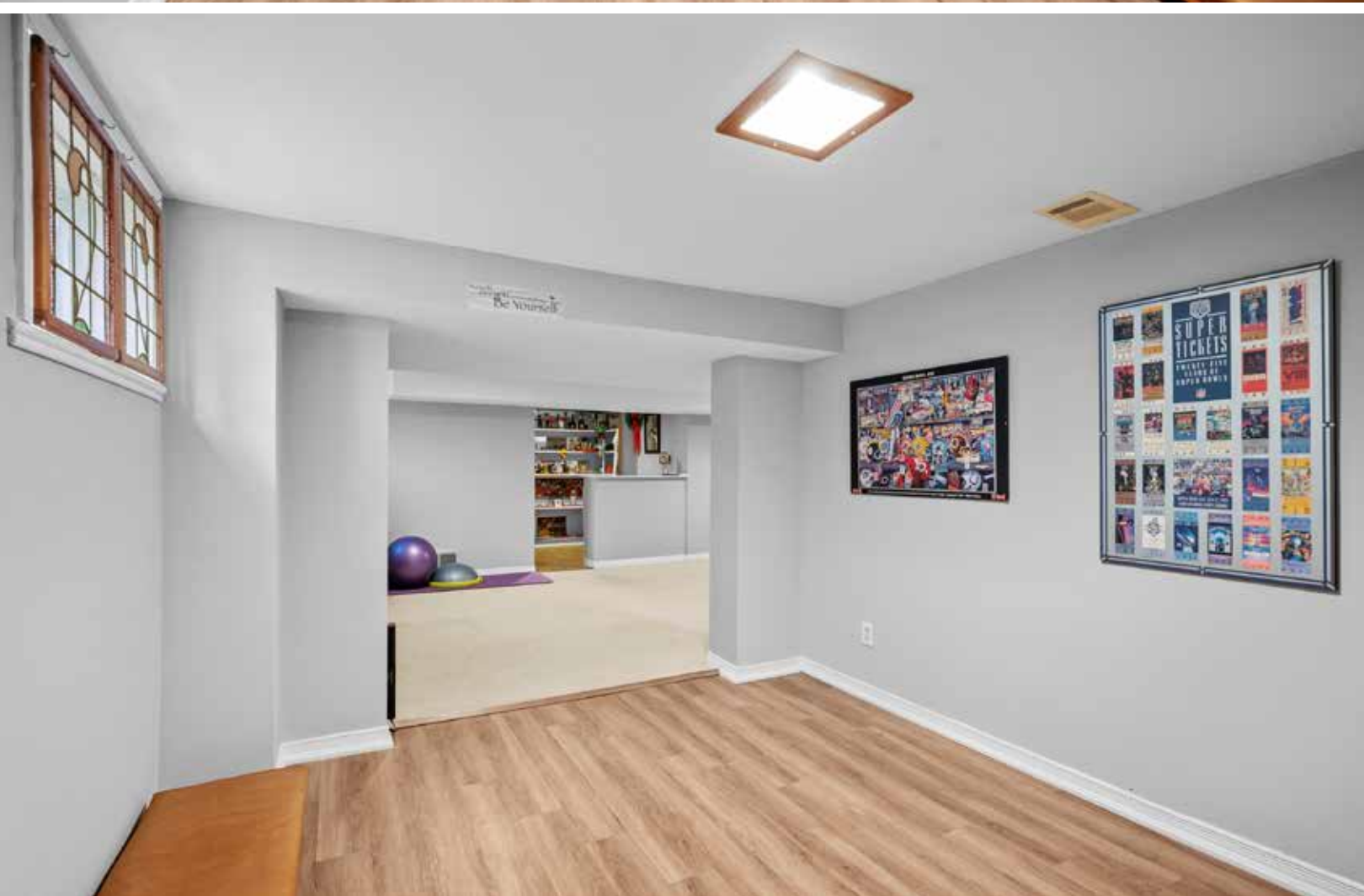


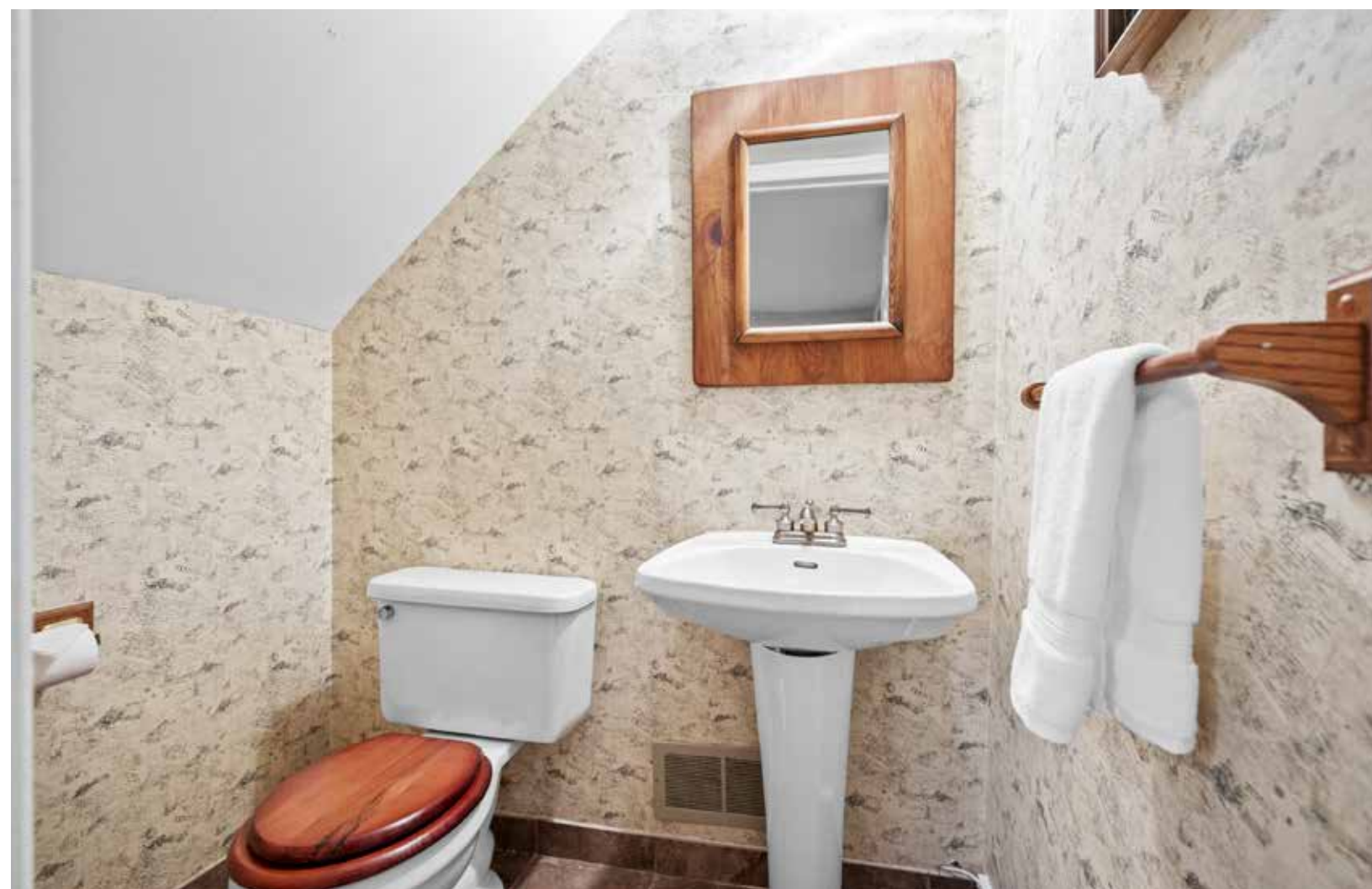










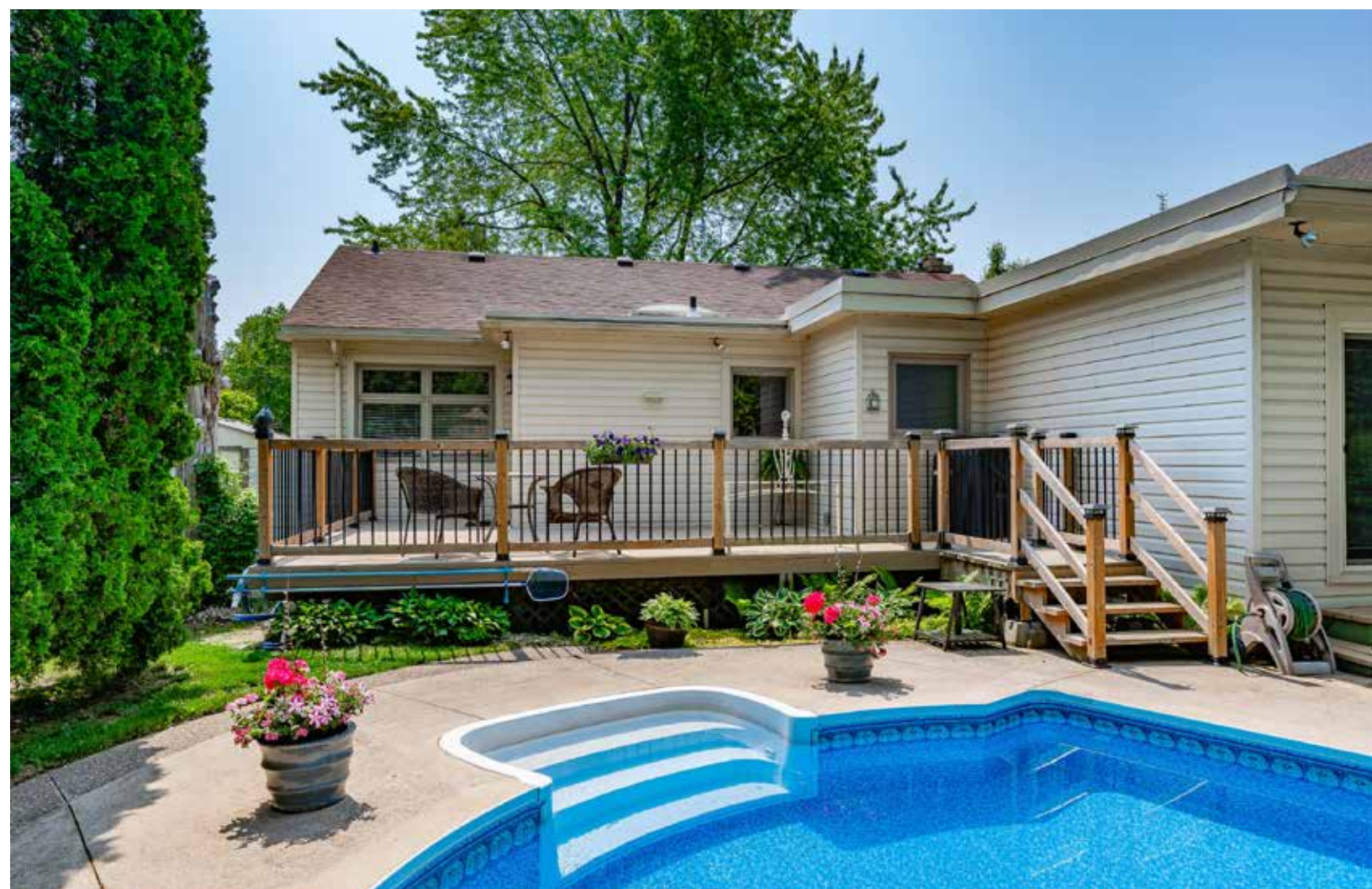


SULLIVAN
REAL ESTATE



SULLIVAN

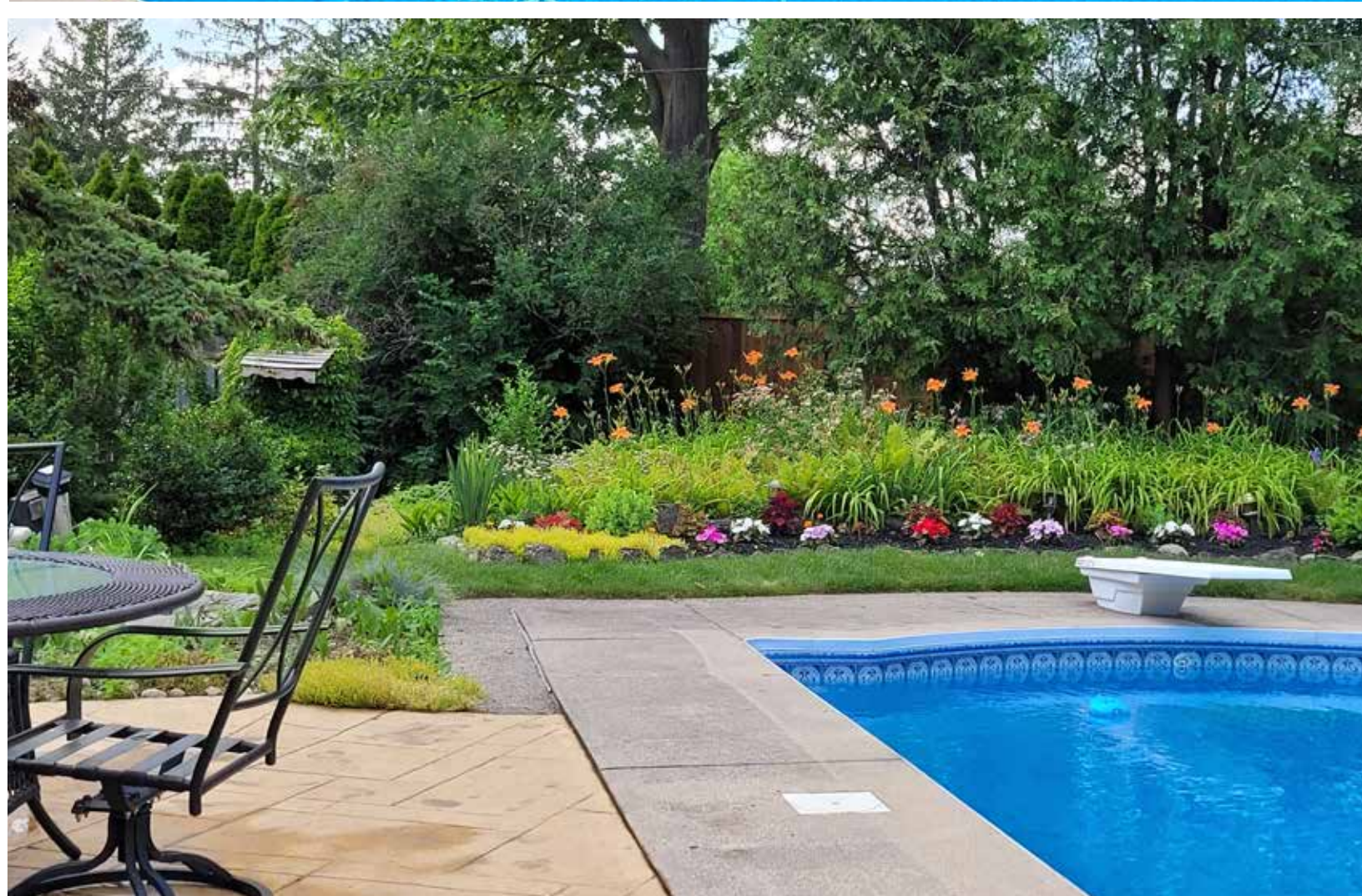
REAL ESTATE













Neighbourhood Report

2173 Deyncourt Drive
Burlington, ON
HOODQ ADDRESS REPORT™

Visit the Homebuyer Hub
<https://hoodq.com>



SCHOOLS

With excellent assigned and local public schools very close to this home, your kids will get a great education in the neighbourhood.



Central PS

Designated Catchment School
Grades PK to 6
638 Brant St

Burlington Central ES

Designated Catchment School
Grades 7 to 8
1433 Baldwin St

Burlington Central HS

Designated Catchment School
Grades 9 to 12
1433 Baldwin St

É Élé Renaissance

Designated Catchment School
Grades PK to 6
1226 Lockhart Rd

ÉS Georges-P-Vanier

Designated Catchment School
Grades 7 to 12
100 Macklin St N

PARKS & REC.

This home is located in park heaven, with 4 parks and a long list of recreation facilities within a 20 minute walk from this address.



Optimist Park

2131 Prospect Street



5 mins



Central Park

2299 New Street



13 mins



Lions Club Park

471 Pearl Street



13 mins

FACILITIES WITHIN A 20 MINUTE WALK

- | | |
|---------------------|-------------------------------|
| 4 Playgrounds | 1 Track |
| 1 Arena | 2 Community Centres |
| 6 Rinks | 1 Sledding Hill |
| 8 Tennis Courts | 1 Sports Court |
| 3 Basketball Courts | 2 Outdoor Games Facilities |
| 4 Ball Diamonds | 1 Community Garden |
| 8 Sports Fields | 3 Arts/Performance Facilities |

TRANSIT

Public transit is at this home's doorstep for easy travel around the city. The nearest street transit stop is only a 5 minute walk away and the nearest rail transit stop is a 10 minute walk away.



Nearest Rail Transit Stop

Burlington GO



10 mins



Nearest Street Level Transit Stop

Drury At Woodward



5 mins

SAFETY

With safety facilities in the area, help is always close by. Facilities near this home include a fire station, a hospital, and a police station within 2.41km.



Joseph Brant Memorial Hospital

1245 North Shore Blvd E



Fire Station

1255 Fairview Street



Police Station

1160 North Shore Blvd E

HoodQ

Disclaimer: These materials have been prepared for matt@sullivanrealestate.ca and are not intended to solicit buyers or sellers currently under contract with a brokerage. By accessing this information you have agreed to our terms of service, which are hereby incorporated by reference. This information may contain errors and omissions. You are not permitted to rely on the contents of this information and must take steps to independently verify its contents with the appropriate authorities (school boards, governments etc.). As a recipient of this information, you agree not to hold us, our licensors or the owners of the information liable for any damages, howsoever caused.

SULLIVAN
— REAL ESTATE —

Floor Plan

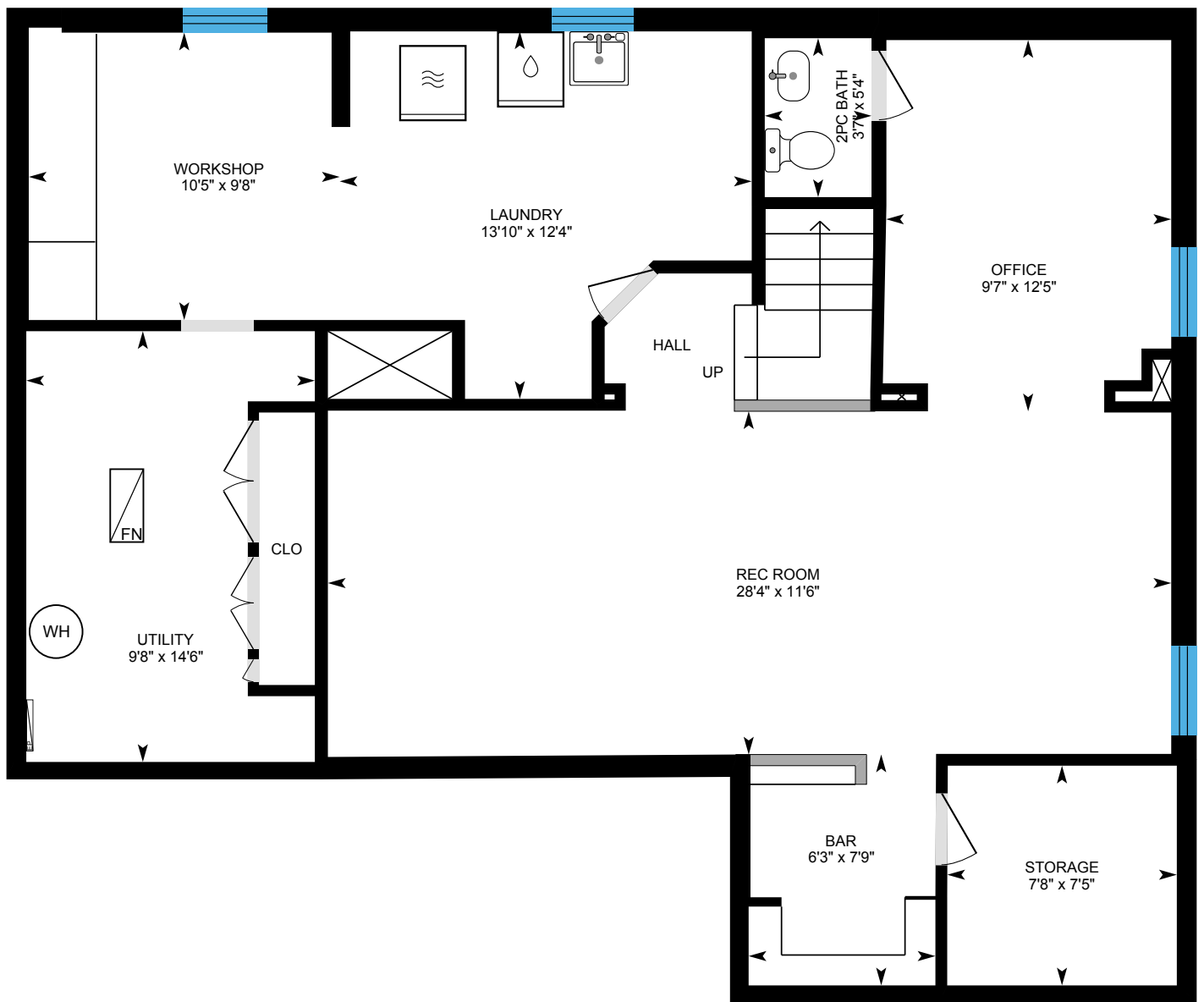
Approx. 1,867 Sq.Ft. Plus Finished Basement

Main Level



Floor Plan

Lower Level



View Online



SCAN ME



Property Webpage

SCAN ME



3D Virtual Tour

SCAN ME



Online Brochure

Open the camera app on your phone, focus on one of the QR codes above then tap the notification on your screen to view online



Property Details

Inclusions: Fridge, stove, built-in dishwasher, microwave, washer & dryer, all electric light fixtures, all window coverings, bathroom mirrors & medicine cabinet, bookshelf in living room, freezer in basement, all pool equipment including the safety cover & BBQ

Exclusions: Plant rack in kitchen, shelves in primary bedroom, stain glass panels in basement & TV mount

Legal Description: LT 24 , PL 458 ; BURLINGTON

Property Taxes: \$6,995 for 2025

Possession: 90 days plus

Deposit: 5%

Square Footage: Approximately 1,867 plus finished basement

Lot Size: Approximately 64.00 feet x 150.00 feet

The information in this brochure is deemed to be accurate, but has not been independently verified, and is NOT guaranteed. All measurements are approximate. Items listed in this brochure are not automatically included unless listed as inclusions in the Agreement of Purchase and Sale. All information should be independently verified.

SULLIVAN

— REAL ESTATE —

SullivanRealEstate.ca



TOP 1% IN CANADA
For Royal LePage
2023



Royal LePage Real Estate Services Ltd., Brokerage



Anita Sullivan

REALTOR® Broker

cell 905-466-4900
office 905-338-3737
anita@sullivanrealestate.ca
sullivanrealestate.ca



Matt Sullivan

REALTOR® Salesperson

cell 905-580-9196
office 905-338-3737
matt@sullivanrealestate.ca
sullivanrealestate.ca

