

# 2120 Blyth Crescent



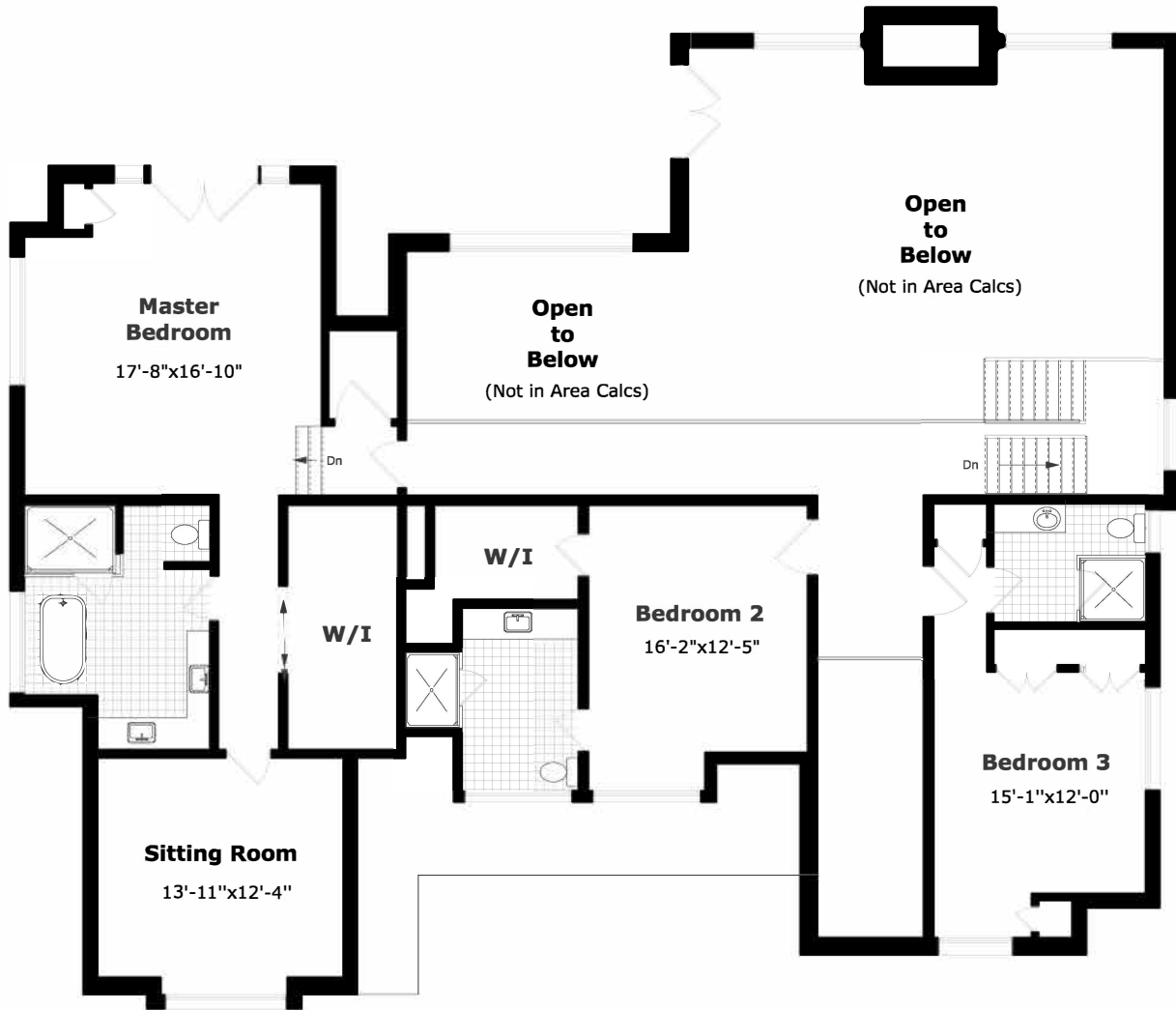
## Main Floor Plan

2,396.2 sq. ft. +  
761.2 sq. ft. (Garage)  
10'-0" Ceiling



Measurements may not be 100% accurate. Floor Plans provided for illustrative purposes only. Room sizes not used to calculate area.

# 2120 Blyth Crescent



## 2nd Floor Plan

2,035.6 sq. ft.

9'-0" Ceiling

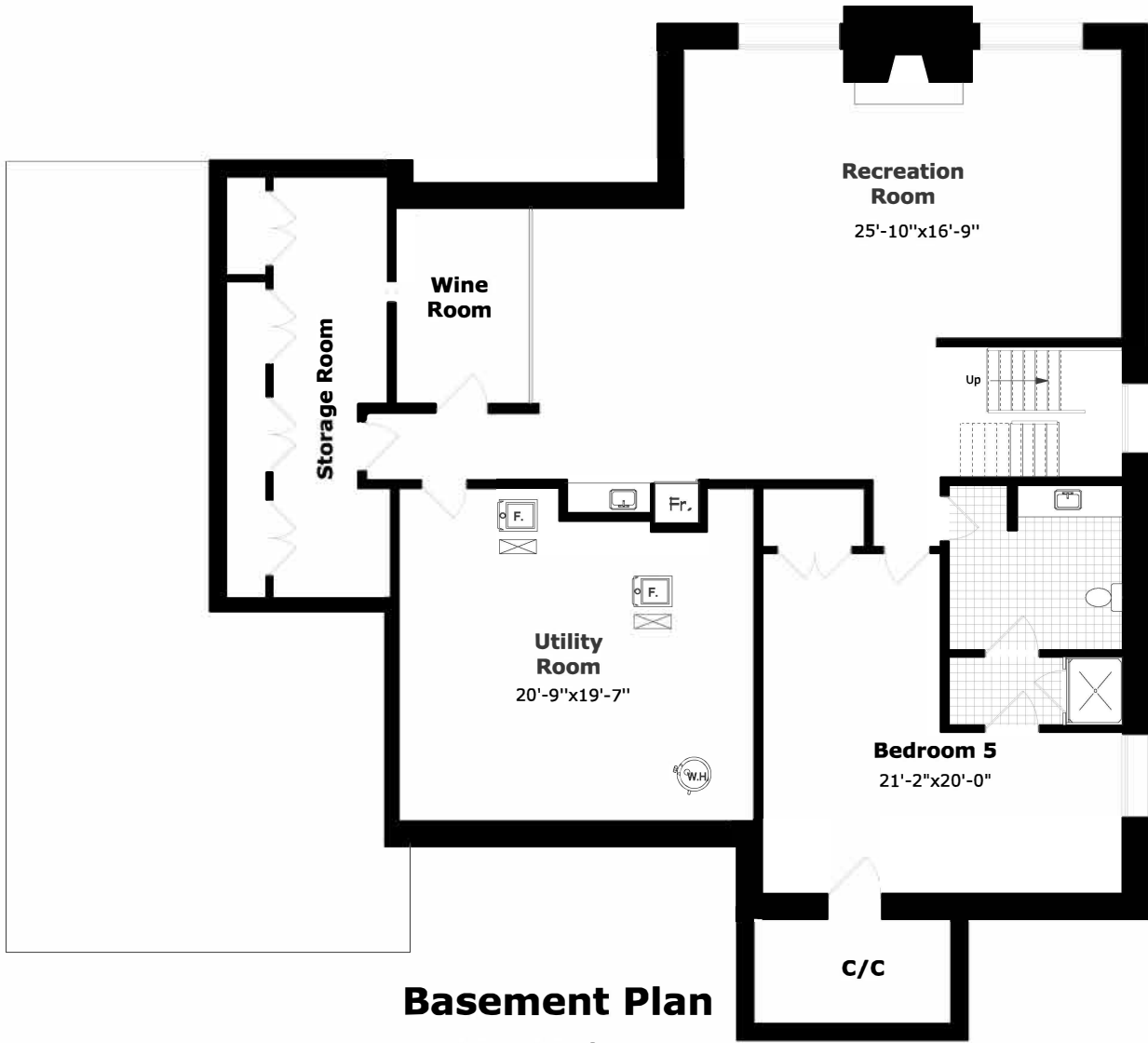


January 2020



Measurements may not be 100% accurate. Floor Plans provided for illustrative purposes only. Room sizes not used to calculate area.

# 2120 Blyth Crescent



## Basement Plan

2,501.8 sq. ft. +  
9'-0" Ceiling



January 2020



Measurements may not be 100% accurate. Floor Plans provided for illustrative purposes only. Room sizes not used to calculate area.