



#901 - 2170 Marine Drive, Oakville

SULLIVAN

— REAL ESTATE —





Welcome to waterfront lakeside condo living with unobstructed fabulous east views of Lake Ontario, the Toronto skyline, and lush treetops. Live at the highly sought after 'Ennisclare II on the Lake' complex.

The inviting floor plan feels grand and spacious, and the large principal rooms allow for idyllic furniture layouts. Expansive living space characterized by floor to ceiling windows with endless walls of glass allowing so much natural daylight and the backdrop of nature in every room. This bright corner suite offers a substantial sized living room, elegant formal dining room and functional kitchen with breakfast area. Enjoy the picturesque views of the lake, skyline & tree cover from the impressive solarium, with large windows that open to capture the soft breeze. Private generous primary bedroom featuring a 4-piece ensuite and plenty of closet space. The 2nd bedroom has convenient access to the 4-piece bathroom. A multi-purpose den and convenient in-suite laundry/storage room complete this well-designed suite. Approximately 1830 square feet of ideal living space. One owned underground parking space and exclusive use locker.

Outstanding building amenities including 24-hour security guard, indoor pool and hot tub, exercise rooms and saunas, club house with library overlooking the lake, party rooms, workshop, billiards, golf range, squash court, table tennis and yoga, art room, tennis court, sun decks, outdoor seating areas with gazebos and stunning gardens, social activities, car wash, bike storage, visitor parking and more. No dogs permitted. Smoke free complex.

This amazing adult lifestyle community is situated on 5 acres of impeccable grounds boasting exquisite gardens and landscaping. Located in vibrant Bronte Village with easy access to Bronte Harbour and the lake, trails and parks, shopping & amenities, cafes and restaurants, and a short drive to the GO station and downtown Oakville.

Lakeside living at it's finest!









SULLIVAN

REAL ESTATE



SULLIVAN
REAL ESTATE











SULLIVAN

REAL ESTATE

































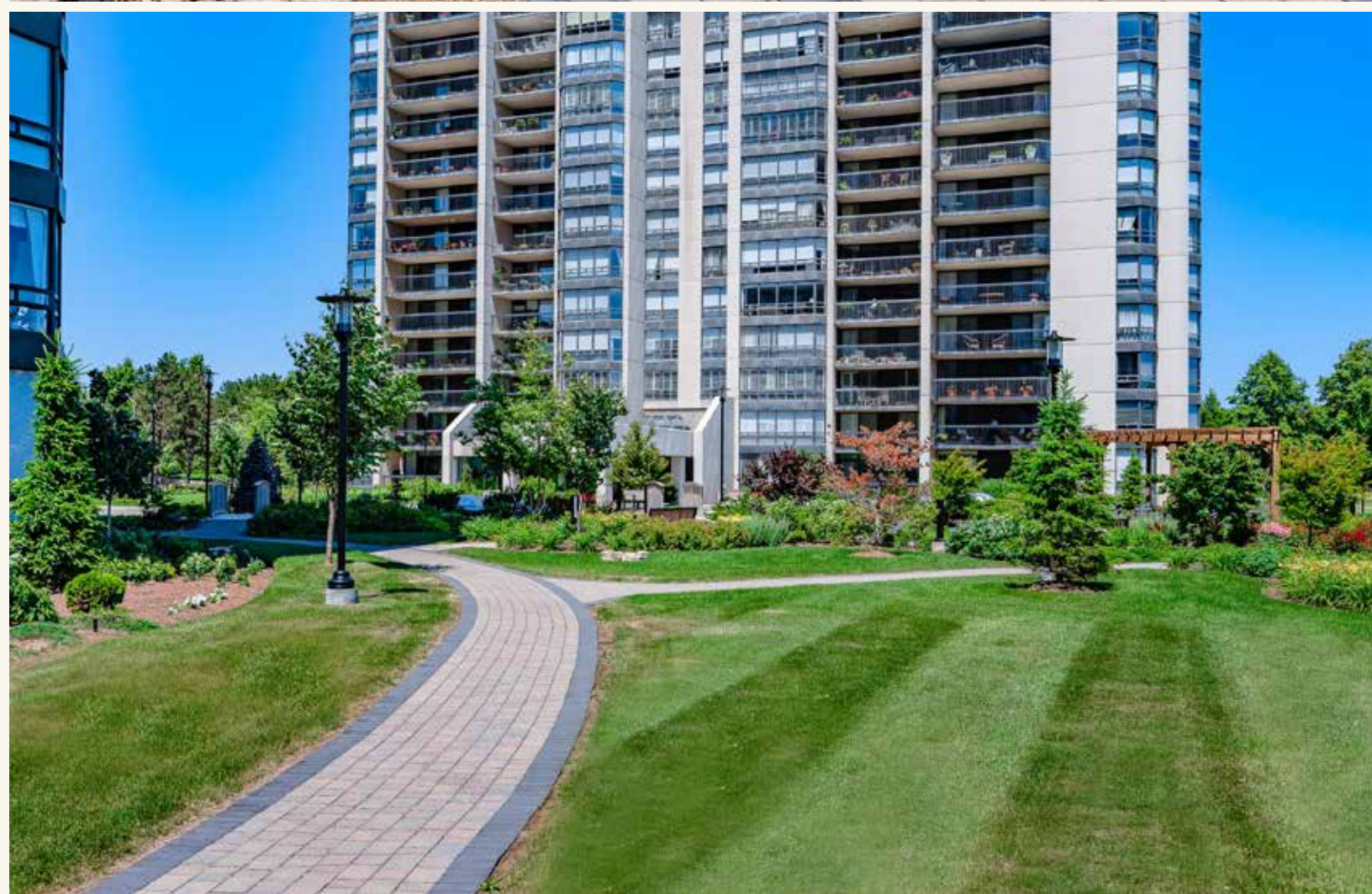














2170 & 2180 Extensive

- 24hr security & gate house
- Club house with kitchen
- Party rooms with kitchen
- Indoor pool and hot tub
- Men's & ladies exercise room
- Men's & ladies saunas
- Indoor golf range & squash
- Organized social activities



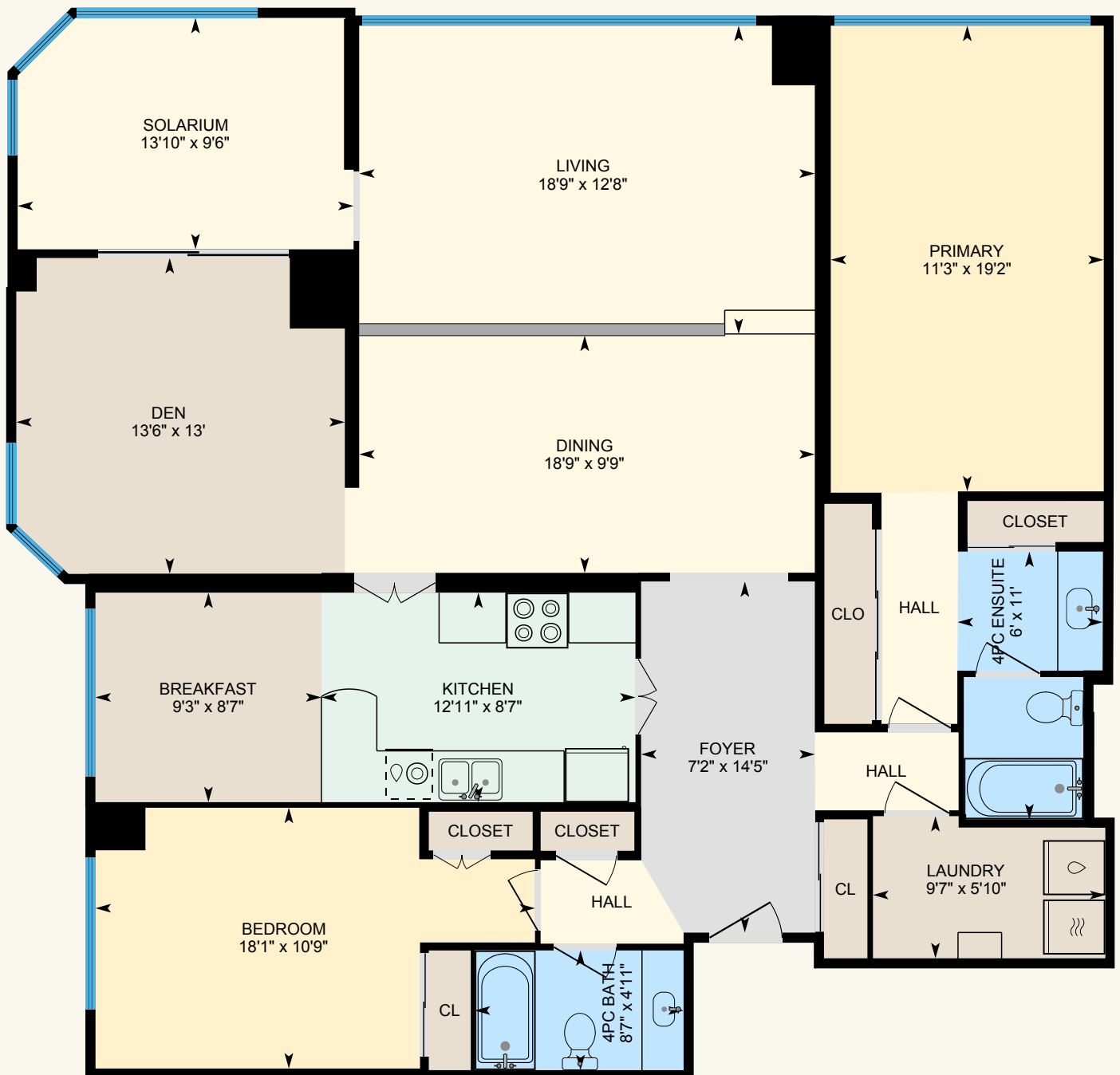
Marine Drive Amenities

- Woodworking shop
- Art room
- Billiards room
- Table tennis room
- Library
- Tennis court
- Car wash
- Bike storage



#901 - 2170 Marine Drive, Oakville

Approx. 1,830 Square Feet





Property Details

Inclusions: Fridge, stove, built-in dishwasher, washer & dryer, all electric light fixtures & all window coverings (as is condition)

Legal Description: UNIT 1, LEVEL 9, HALTON CONDOMINIUM PLAN NO. 129

Taxes: \$5,556 for 2023

Possession: Flexible

Square Footage: Approximately 1,830

Deposit: 5%

Condo Fee: \$1,510.99 includes building insurance, common elements, exterior maintenance, heat, hydro, water, central air conditioning, basic cable TV, high speed internet & visitor parking

Pets: Restricted - No Dogs

NO SMOKING COMPLEX

Owned Parking: Underground #115A

Locker: Exclusive use - Room #3 Locker #111

The information in this brochure is deemed to be accurate, but has not been independently verified, and is NOT guaranteed. All measurements are approximate. Items listed in this brochure are not automatically included unless listed as inclusions in the Agreement of Purchase and Sale. All information should be independently verified.

SULLIVAN

REAL ESTATE

SullivanRealEstate.ca

TOP 2% in ONTARIO
For Royal LePage



Royal LePage Real Estate Services Ltd., Brokerage



Anita Sullivan

Broker

cell 905-466-4900

office 905-338-3737

anita@sullivanrealestate.ca

sullivanrealestate.ca



Matt Sullivan

Sales Representative

cell 905-580-9196

office 905-338-3737

matt@sullivanrealestate.ca

sullivanrealestate.ca

