



2020 Lumberman Lane, Oakville

SULLIVAN

— REAL ESTATE —





Fantastic sun-filled, updated family home in the sought-after community of Glen Abbey. This three-bedroom link property (attached by the garage) features a premium oversized lot with great curb appeal, boasting gorgeous gardens, interlock driveway and a double car garage. Well designed plan boasting approximately 2093 square feet of exceptional living space on two floors, gracing an abundance of large windows allowing plenty of natural daylight, California style shutters, pot lights, crown moulding and much more.

The main level welcomes you with an inviting bright foyer that opens to the entertainment sized formal dining room and living room featuring a wood burning fireplace with stylish mantel surround. The impressive kitchen offers stainless-steel appliances including a gas stove, modern back splash, granite counters, ample cabinetry, and pantries. Outfitted with a breakfast area and a glass sliding door walkout to the private backyard oasis. Enjoy the large patio surrounded by lush greenery and tree canopy. Convenient 2-piece powder room, laundry room and inside entry to the garage.

The upper level hosts a fabulous massive family room showcasing vaulted ceilings and a gas fireplace highlighting a grand floor to ceiling brick surround. The large primary bedroom retreat presents a walk-in closet & 4-piece ensuite. Two additional good-sized bedrooms with large windows & closets and 4-piece bathroom with skylight. The unspoiled lower level offers plenty of space for additional living and storage. Rain Bird irrigation system in the front yard. Roof shingles 2020.

This ideal property is conveniently located close to amenities, shopping, Glen Abbey rec centre, new hospital, trails & parks, & the renowned Monastery bakery & Glen Abbey golf course. Walking distance to top rated schools & easy access to major highways & the GO station.

The perfect family home to move in and enjoy!









SULLIVAN

REAL ESTATE





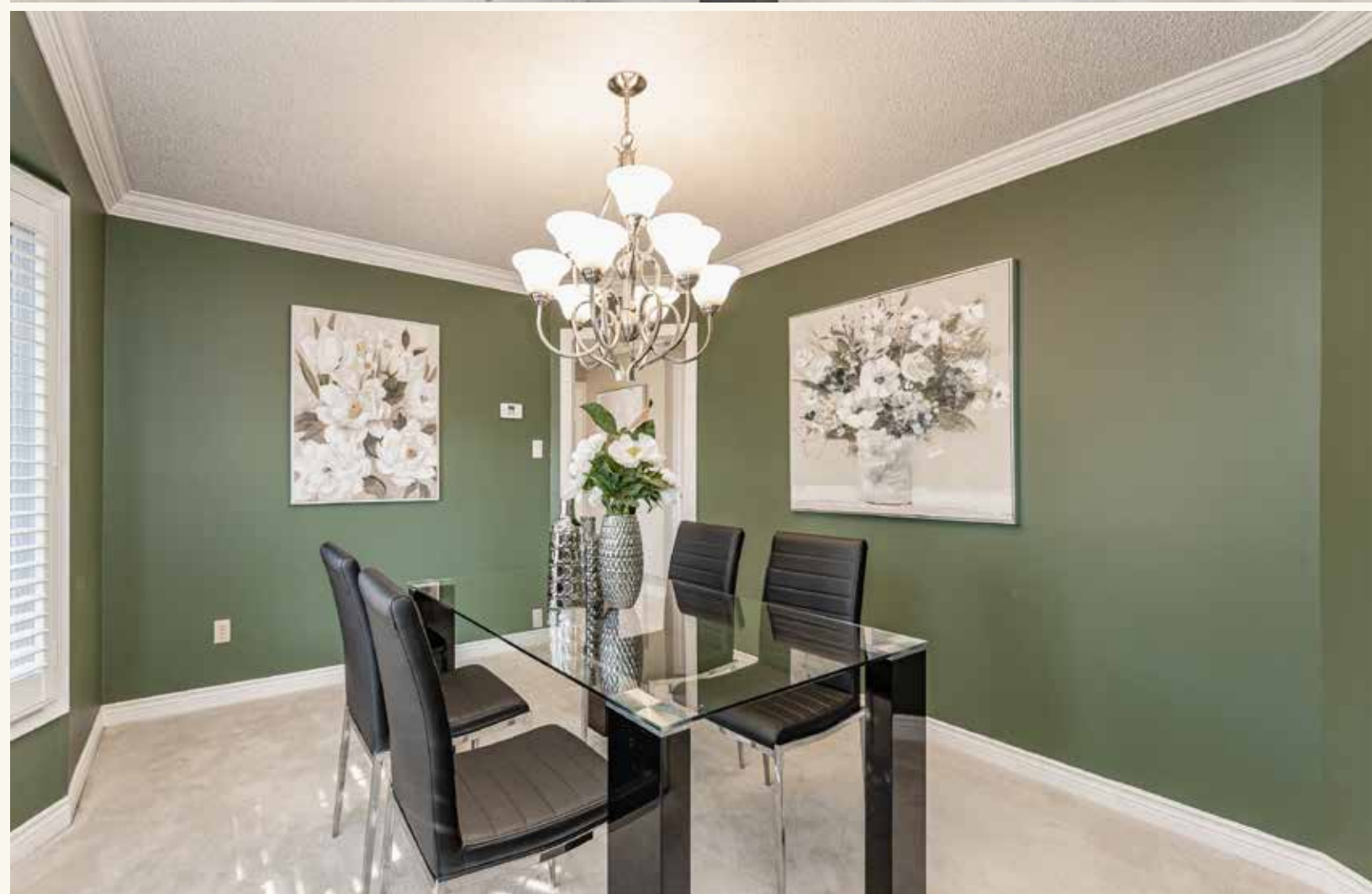




SULLIVAN

REAL ESTATE







SULLIVAN

REAL ESTATE













SULLIVAN

REAL ESTATE





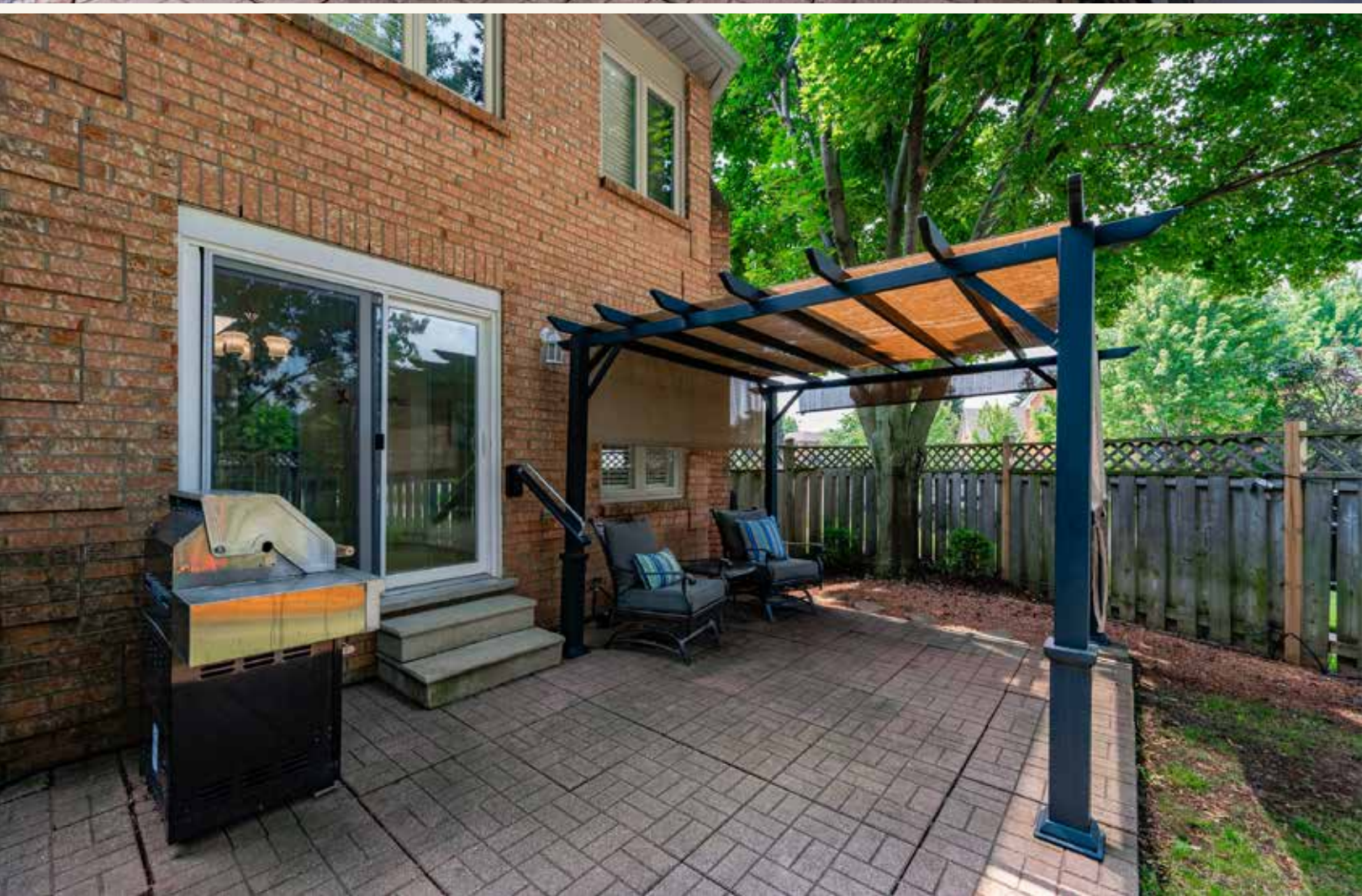






SULLIVAN

REAL ESTATE











Sobeys Glen Abbey



Glen Abbey Community Centre



Abbey Park High School



Glen Abbey Community Centre



Abbey Park High School



Abbey Park High School



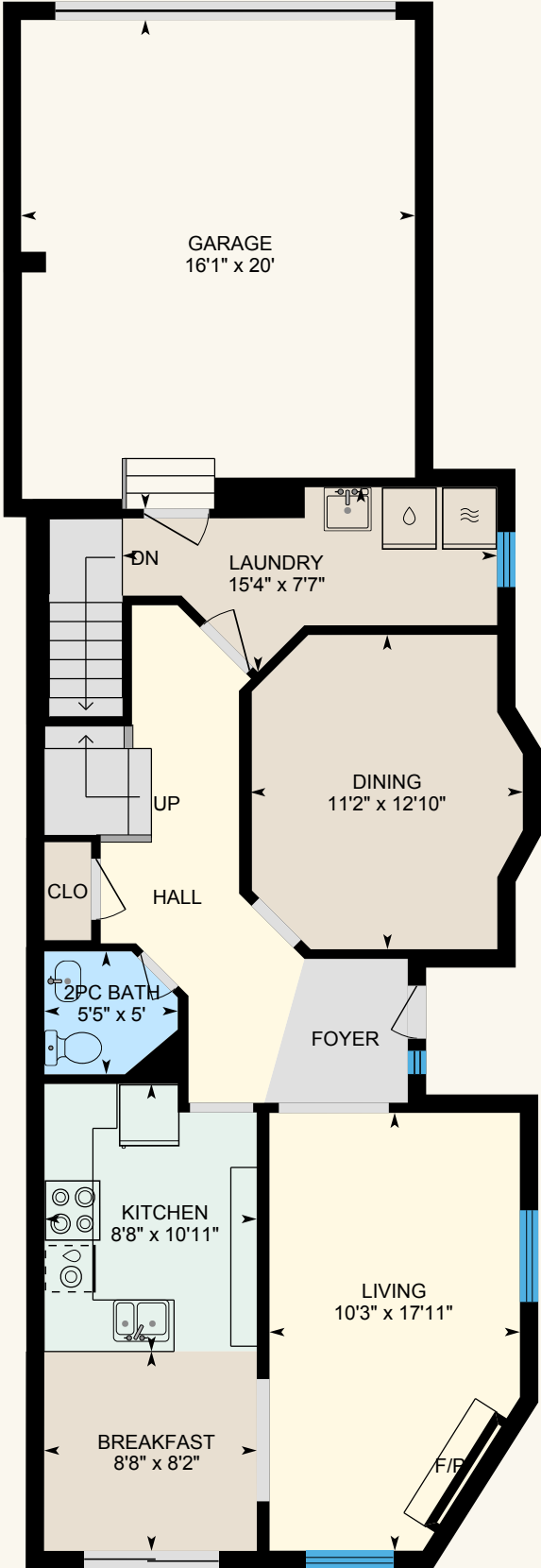
Sobeys Glen Abbey



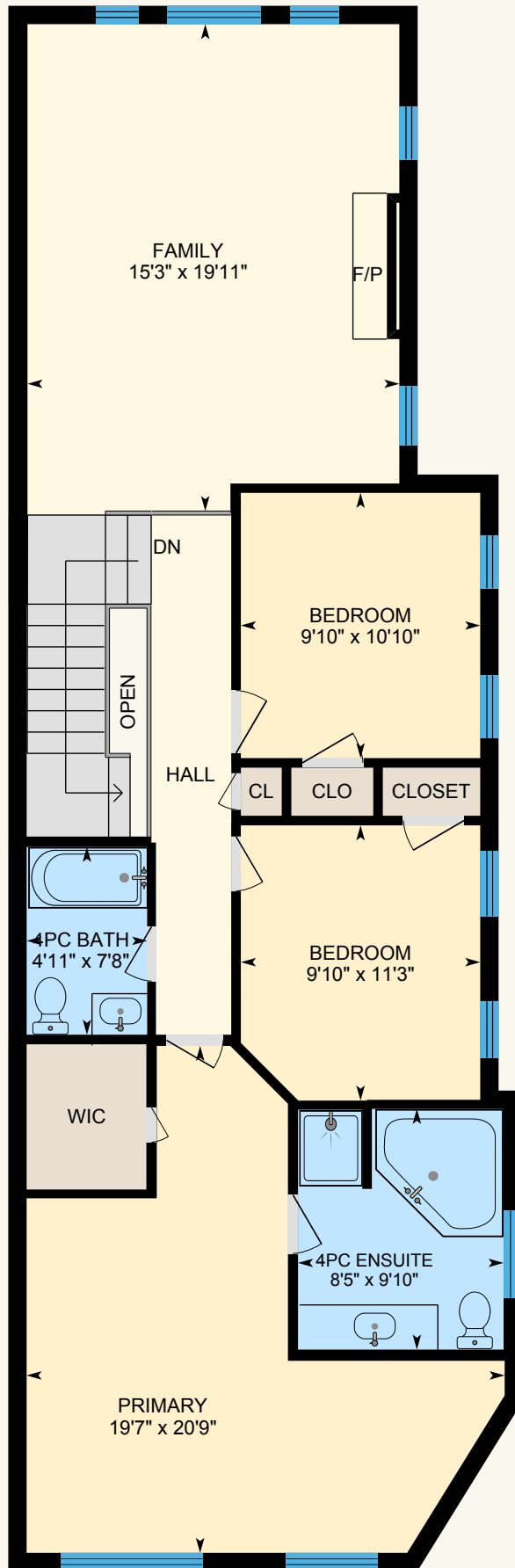
2020 Lumberman Lane, Oakville

Approx. 2,093 sq ft plus unfinished basement

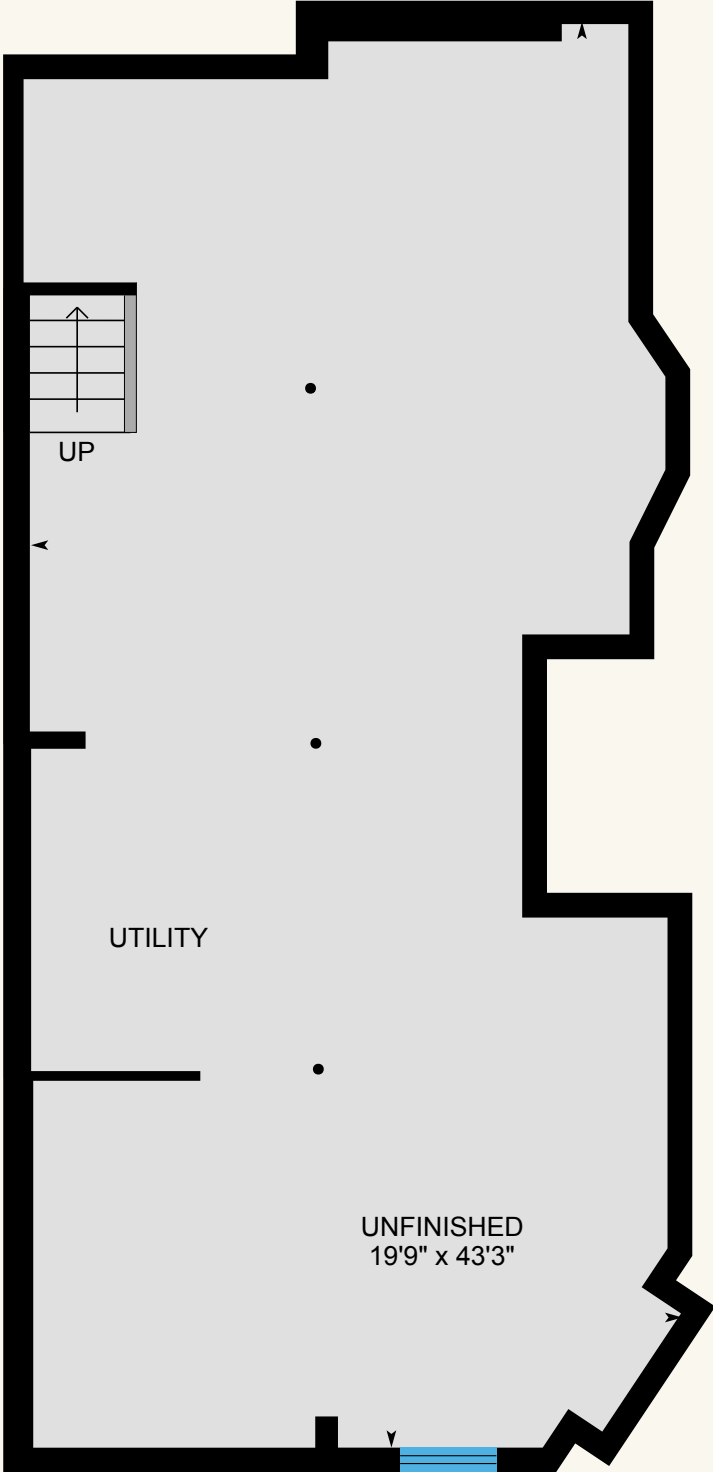
MAIN LEVEL



SECOND LEVEL



LOWER LEVEL







Property Details

Inclusions: Fridge, Gas Stove, Built-In Dishwasher, Built-In Microwave, Washer & Dryer, All Electric Light Fixtures, All Window Coverings & Irrigation System in Front Yard

Legal Description: LPCL BLK 145-5, SEC 20M484 ; PT BLK 145, PL 20M484 , PART 25, 26 & 27 , 20R9824 , T/W PT 3 , 20R8005, AS IN 123109, T/W PT 2, 20R8005, AS IN 123110, S/T PTS 25 & 26, 20R9824 IN FAVOUR OF PTS 22, 23 & 24, 20R9824, AS IN H444806, T/W PT BLK 145, 20M484, PT 24, 20R9824, AS IN H444806, S/T H449667 ; OAKVILLE

Taxes: \$5,138 for 2023

Possession: Flexible

Square Footage: Approximately 2,093 Plus Unfinished Basement

Deposit: 5%

Lot Size: Approximately 88.71 Feet x 90.85 Feet

Rental: Hot Water Tank

The information in this brochure is deemed to be accurate, but has not been independently verified, and is NOT guaranteed. All measurements are approximate. Items listed in this brochure are not automatically included unless listed as inclusions in the Agreement of Purchase and Sale. All information should be independently verified.

SULLIVAN

REAL ESTATE

SullivanRealEstate.ca

TOP 2% in ONTARIO
For Royal LePage



Royal LePage Real Estate Services Ltd., Brokerage



Anita Sullivan

Broker

cell 905-466-4900

office 905-338-3737

anita@sullivanrealestate.ca

sullivanrealestate.ca



Matt Sullivan

Sales Representative

cell 905-580-9196

office 905-338-3737

matt@sullivanrealestate.ca

sullivanrealestate.ca

