



#1508 - 2170 Marine Drive, Oakville

SULLIVAN

— REAL ESTATE —





Fabulous, renovated suite with quality luxurious finishes & meticulous attention to detail. Enjoy the beautiful views of Lake Ontario, Bronte Harbor & gorgeous gardens situated on five acres of exquisite, landscaped grounds on the banks of Lake Ontario. Modern, open concept design with an abundance of natural daylight boasting large floor to ceiling windows, hardwood floors, granite counters, pot lights, crown moulding, quality light fixtures & window blinds & much more!

This two bedroom, two bathroom corner suite offers 1828 square feet of exceptional living space & three walkouts to the extra-large balcony overlooking the lake & Bronte Harbour. Located in the prestigious 'Ennisclare II on the Lake' complex in vibrant Bronte Village within walking distance to the lake, trails & parks, restaurants & shopping with easy access to Oakville GO train, downtown Oakville & major highways.

The impressive custom kitchen features ample cabinetry, pantry, stainless steel appliances, undercabinet lighting & a large peninsula with pendant lighting & breakfast bar. Generous open concept living room, formal dining room & spacious den perfectly designed for entertaining & everyday life. The primary bedroom retreat presents a walk-out to the balcony, large walk-in closet, additional closet & lavish spa inspired 4-piece ensuite with glass walk-in shower. Large second bedroom, convenient 4-piece main bathroom with tub/shower combination & good-sized in-suite laundry/storage room. Two underground parking spaces & one locker. (Never lived in since renovated.)

Extensive building amenities including 24 hour security guard, indoor pool & hot tub, exercise rooms & saunas, club house with library overlooking the lake, party rooms, workshop, billiards, golf range, squash court, table tennis & yoga, art room, tennis court, sun decks, outdoor seating areas with gazebos & stunning gardens, social activities, car wash, bike storage, visitor parking & more. No pets permitted. Smoke free complex. Luxurious lakeside living!





















SULLIVAN
— REAL ESTATE —







2170 & 2180 Extensive

- 24hr security & gate house
- Club house with kitchen
- Party rooms with kitchen
- Indoor pool and hot tub
- Men's & ladies exercise room
- Men's & ladies saunas
- Indoor golf range & squash
- Organized social activities



Marine Drive Amenities

- Woodworking shop
- Art room
- Billiards room
- Table tennis room
- Movie room
- Library
- Tennis court
- Car Wash

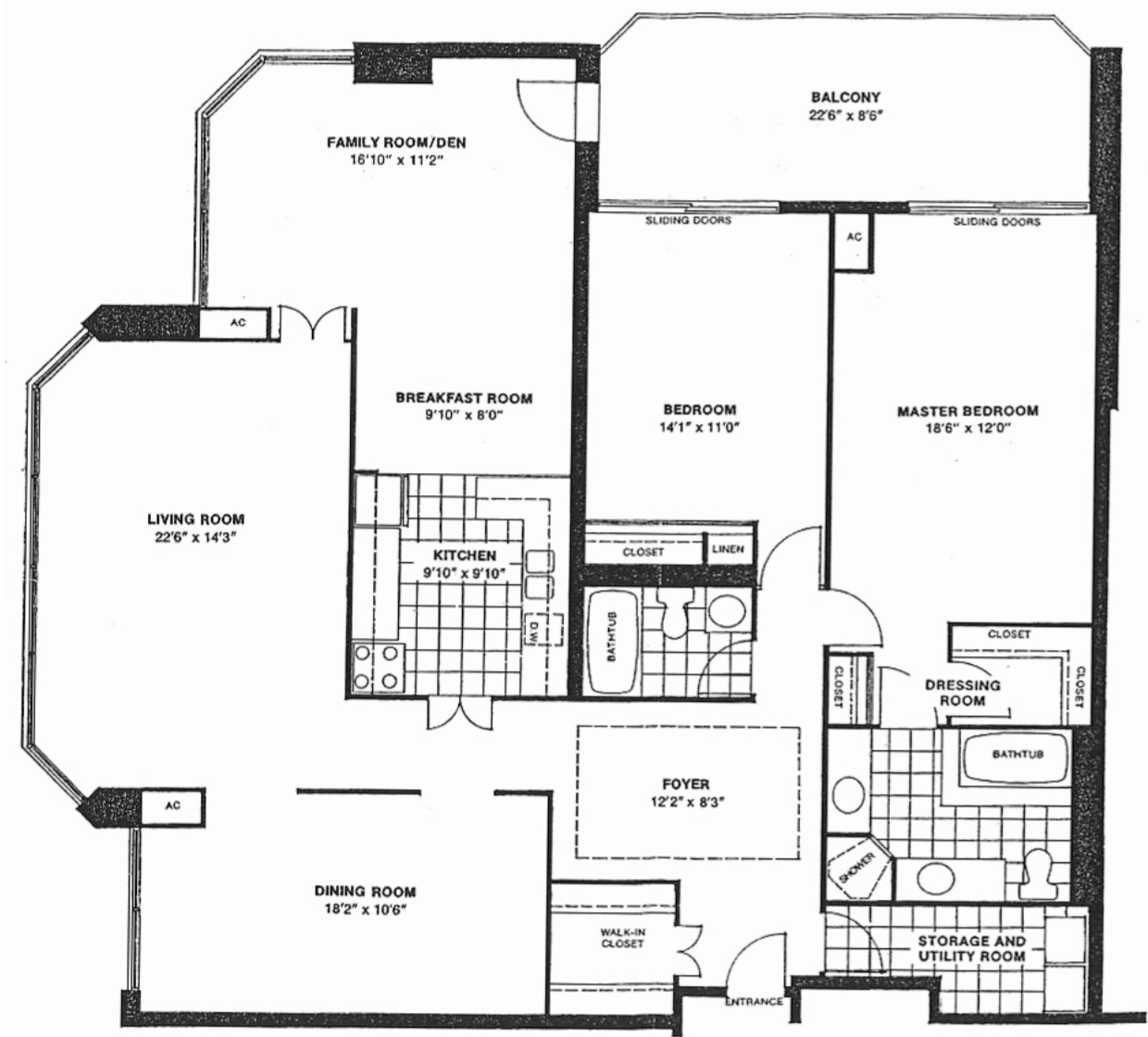


2170 Marine Drive
The Esplanade '08'

2 Bedrooms + Den
Floor Area: 1,828 sq.ft. plus balcony



Actual Floor Plan Has Been Modified From Original





Property Details

Inclusions: Fridge, stove, built-in dishwasher, microwave, washer & dryer, all electric light fixtures & all window coverings

Legal Description: UNIT 8, LEVEL 14, HALTON CONDOMINIUM PLAN NO. 129

Possession: Immediate

Square Footage: Approximately 1828 square feet plus extra-large (approx. 22'6" x 8'6") balcony

Deposit: First & last month's rent

Lease Fee Includes: Central air conditioning, heat, hydro, water, basic cable TV, high speed internet & visitor parking

Pets: Not permitted

No Smoking Complex

Underground Parking: #40 & #41

Locker: Room #3 Locker #87

The information in this brochure is deemed to be accurate, but has not been independently verified, and is NOT guaranteed. All measurements are approximate. Items listed in this brochure are not automatically included unless listed as inclusions in the Agreement of Purchase and Sale. All information should be independently verified.

SULLIVAN

REAL ESTATE

TOP 2% in Ontario
For Royal LePage

SullivanRealEstate.ca



Anita Sullivan

Broker

cell 905-466-4900

office 905-338-3737

anita@sullivanrealestate.ca

sullivanrealestate.ca



Matt Sullivan

Sales Representative

cell 905-580-9196

office 905-338-3737

matt@sullivanrealestate.ca

sullivanrealestate.ca

