



#1102 - 2180 Marine Drive, Oakville

SULLIVAN

— REAL ESTATE —





Welcome to luxurious living in one of Oakville's most prestigious condo buildings "Ennisclare II on the Lake". The highly sought after 'Cedarbrae' model offering 1681 square feet of well-appointed luxury, two bedrooms, two bathrooms and private den (with no stepdown). This outstanding corner unit with copious floor to ceiling windows boasting plenty of natural daylight features numerous tasteful upgrades including lustrous hardwood floors. Savor the beautiful views of Lake Ontario, gardens and the Toronto skyline situated on five acres of exquisite, landscaped grounds on the banks of Lake Ontario. Ideal living in trendy Bronte Village just steps to Bronte Harbour & the lake, trails & parks, shopping, and restaurants and close to downtown Oakville and the GO station.

This impressive, updated suite features a stylish kitchen equipped with a spacious breakfast area, plenty of cabinets, pull out drawers, granite counters, tile back splash, stainless steel appliances and pot lights. Entertainment sized formal dining room, handy private den and generous open concept living room with a sliding glass door walkout to the extra-large balcony with superb views. Relish in the master bedroom sanctuary with a walk-out to the balcony, featuring double closets & a gorgeous spa inspired 3-piece ensuite with walk-in shower. Large second bedroom is convenient to the 4-piece main bathroom with tub/shower combination. Spacious in-suite laundry/storage room with sink. One owned underground parking space & one exclusive use locker.

Extensive building amenities including 24 hour security guard, indoor pool & hot tub, exercise rooms & saunas, club house with library overlooking the lake, party rooms, workshop, billiards, golf range, squash court, table tennis & yoga, art room, movie room, tennis court, sun decks, outdoor seating areas with gazebos & stunning gardens, social activities, car wash, bike storage, visitor parking & more. No dogs permitted. Smoke free complex.

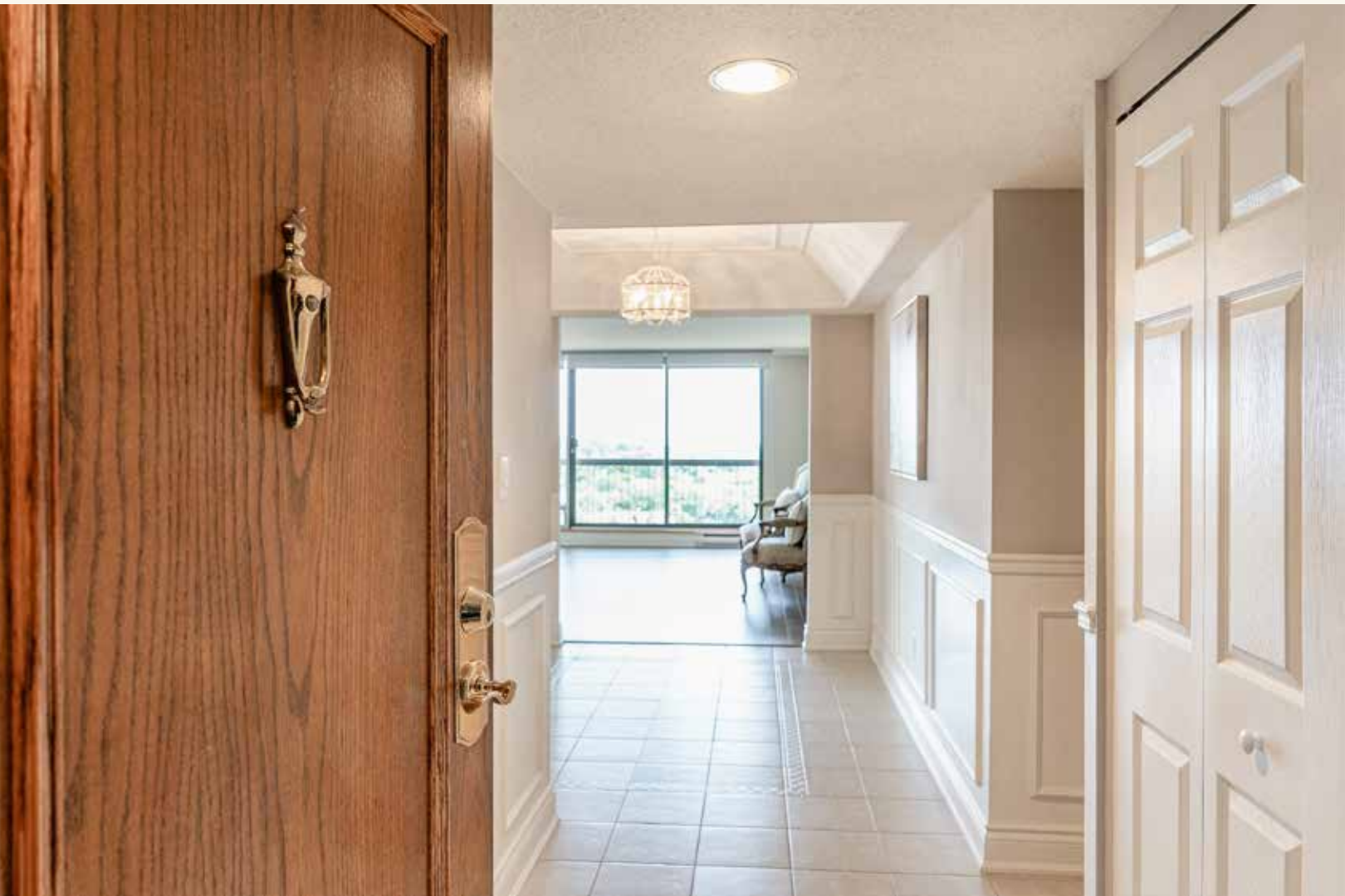
Luxurious lakeside living!











SULLIVAN

REAL ESTATE











SULLIVAN

REAL ESTATE

















SULLIVAN

REAL ESTATE





SULLIVAN

REAL ESTATE









SULLIVAN

REAL ESTATE



















2170 & 2180 Extensive

- 24hr security & gate house
- Club house with kitchen
- Party rooms with kitchen
- Indoor pool and hot tub
- Men's & ladies exercise room
- Men's & ladies saunas
- Indoor golf range & squash
- Organized social activities



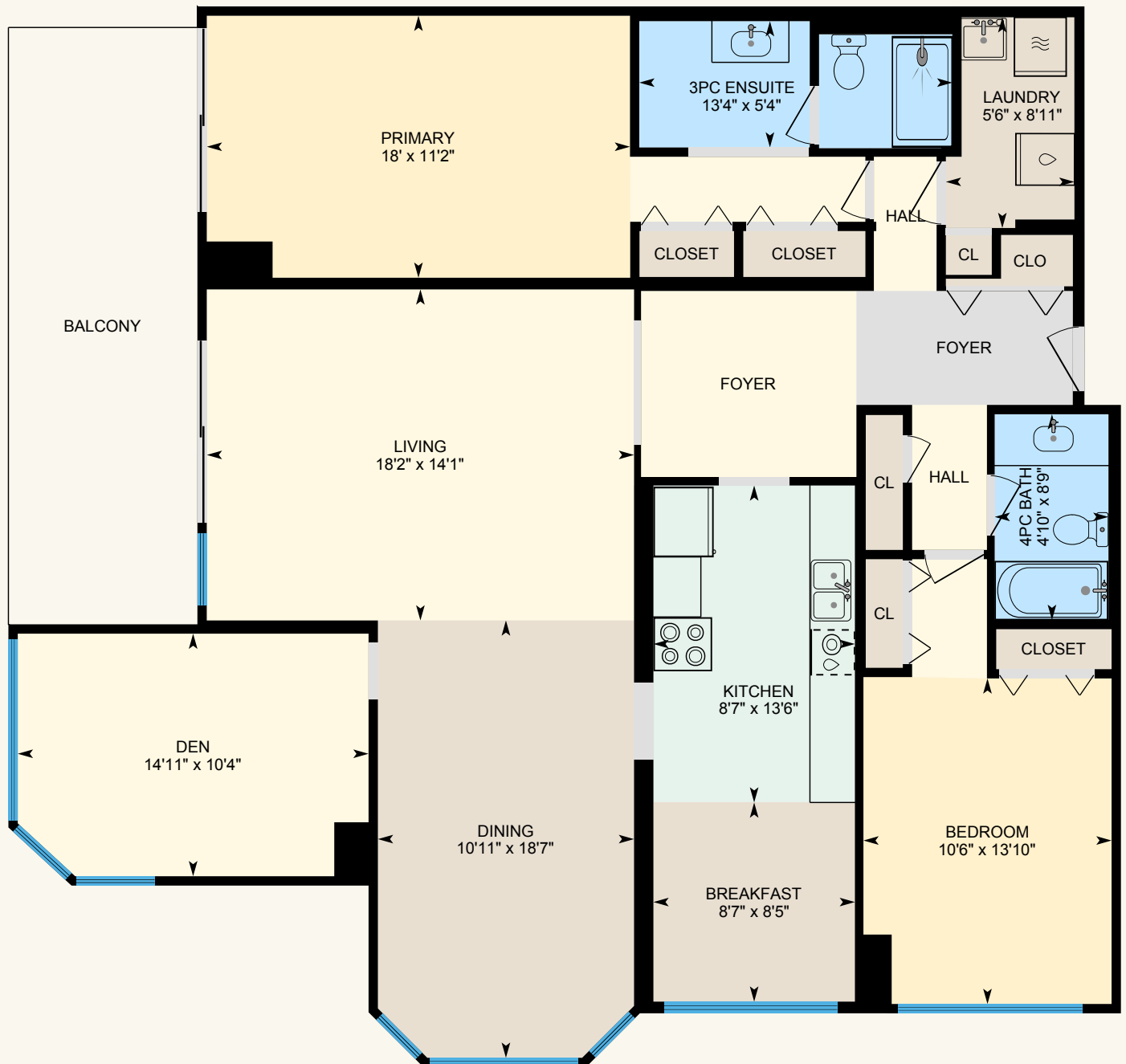
Marine Drive Amenities

- Woodworking shop
- Art room
- Billiards room
- Table tennis room
- Movie room
- Library
- Tennis court
- Car Wash



#1102 - 2180 Marine Drive, Oakville

Approx. 1681 sq ft
plus extra large balcony





Property Details

Inclusions: Fridge, stove, built-in dishwasher, rangehood, washer & dryer, all electric light fixtures, all window coverings, wall wine rack & white cabinet in kitchen

Legal Description: UNIT 2, LEVEL 11, HALTON CONDOMINIUM PLAN NO. 114

Taxes: \$5231 for 2021

Possession: 30 - 60 days

Square Footage: Approximately 1681 square feet plus extra-large private balcony

Deposit: 5%

Condo Fee: \$1610.47 includes building insurance, common elements, exterior maintenance, central air conditioning, heat, hydro, water, basic cable TV, high speed internet and visitor parking

Pets: Restricted - No Dogs

NO SMOKING COMPLEX

Owned Parking: #168

Lockers: Exclusive Use - Room #3 #121

The information in this brochure is deemed to be accurate, but has not been independently verified, and is NOT guaranteed. All measurements are approximate. Items listed in this brochure are not automatically included unless listed as inclusions in the Agreement of Purchase and Sale. All information should be independently verified.

SULLIVAN

— REAL ESTATE —

SullivanRealEstate.ca

TOP 2% in CANADA
For Royal LePage



Royal LePage Real Estate Services Ltd., Brokerage



Anita Sullivan

Broker

cell 905-466-4900

office 905-338-3737

anita@sullivanrealestate.ca

sullivanrealestate.ca



Matt Sullivan

Sales Representative

cell 905-580-9196

office 905-338-3737

matt@sullivanrealestate.ca

sullivanrealestate.ca

